



Neighborhood Repaving Program

PROJECT OVERVIEW

The City has embarked on a multi-year initiative to repave 110 of the City's subdivisions. Quality streets protect property values and enhance the quality of life of its citizens.

PROJECT TIMELINE

The program is currently projected to last through 2018.

KEY POINTS

- In 2011, a consultant with a specially equipped vehicle drove each road to measure its PQI. A low PQI reflects poor road condition.
- The repaving program currently is projected to run through 2018.
- View the Neighborhood Repaving List [here](#)

PROJECT LOCATIONS

2015 - Completed

North Bridges	Bridgewater
Hunters Forest	Carriage Park
Colony Glen	Georgian Ridge
Chessington Chase	Mayfair
Farm Brook Subdivisions Consolidated	Woodland Hills
River Trace	Mackinac
Jones Bridge Plantation	Reserve at Foxdale, The
Queensbury East	Silver Ridge
Spring Meadows Farms	Estates at Wellington, The
Doublegate	Forrest Lake
Linkwood	Ivey Ridge
Aviary Ridge	Surrey Park
Queensbury	Village at Jones Ferry, The
Saint Clair	Glastonberry
Standard View	Morton Chase
River Club	Chartwell
Anaheim Farms	

2016 - Completed

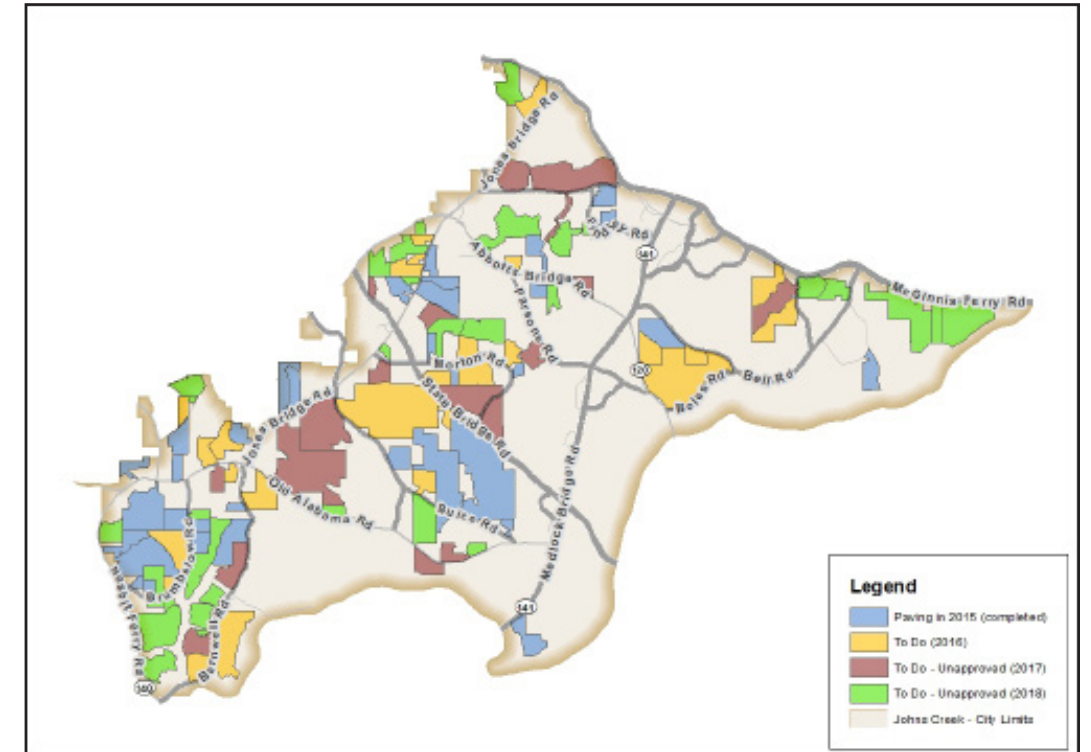
Creekside	River Ridge
Hartridge	Amberleigh
Jones Bridge Place	Aviary
Brookshire Lake	Bridgemor Heights
Enclave at Foxdale, The	Cameron Crest Farms
Foxworth	Carrington
Roswell Mill	Park at Breckenridge, The
Brumbelow Crossing	Evergreen Trace
Esates at Foxdale, The	Fox Creek
Highland Park	laurelwood
Churchill Downs	River Glen
Donamere	Sugar Mill
Enclave at Breckenridge, The	
Laurel Ridge	

2017 - Planned

Fairway Ridge	Abbotts Station
North Peak	Falls of Autry Mill, The
Cameron Forest	Preston Oaks
Lexington Woods	River Farm
Stratmore	Crossington Road at Wellington
Rimberlane	Cambridge
Devonhall	Falcon Ridge
Oxford Mill	Gates, The
Randolph Hall	

2018 - Proposed

Waterford	Lakeview Estates
Wynbrook	Mount View
Abbotts Chase	Oakd Landing
Abbotts Walk	Rivermont Colony
Belmont Farms	Blackstone
Concord Hall	Hampton Square
Highlands at Johns Creek	St. Regis
Park at Rivermont, The	Park at Wellington, The
Estates at Deer Chase	Ridge at Brumbelow, The
River Knoll	Rivermont Club
River Walk	Summer Trace
Alvin Estates	Hunter's Close
Brookhollow	Hunt's Pointe Jaden Woods
Hillbooke	Kimball Parc
Huntington	Rivermont
Jones Bridge Woods	



View the 4 Year Paving Plan Map [here](#)

PROCESS

• **Roadway Milling:** The existing roadway will be milled (ground up) and removed to provide a better tie-in at driveways and a smoother ride. This will temporarily lower the road. All driveways will be accessible at all times.

• **Patching:** The roadway will be inspected for base failures and marked for repair. The marked areas will be cut out, removed and replaced with stable material to strengthen the road.

• **Tack Coat Placement:** A layer of tack coat (a tar-like substance) will be sprayed immediately prior to placement of asphalt. The tack is a sticky substance that may stick to your vehicle if you drive on it, so avoid it if at all possible.

• **Roadway Paving:** Once the tack has been placed, hot-mix asphalt will be laid to resurface the road. Please don't drive on just-laid asphalt if possible.

• **Rolling:** The pavement then will be rolled to compact the asphalt. The asphalt should be safe to drive on within a few hours.

• The time required to repave a subdivision depends on several factors: the size of the subdivision, the overall conditions of the streets, weather, and availability of equipment and materials. However, rest assured that we intend to work as fast as quality and time allows. Paving will be done during daylight hours.