

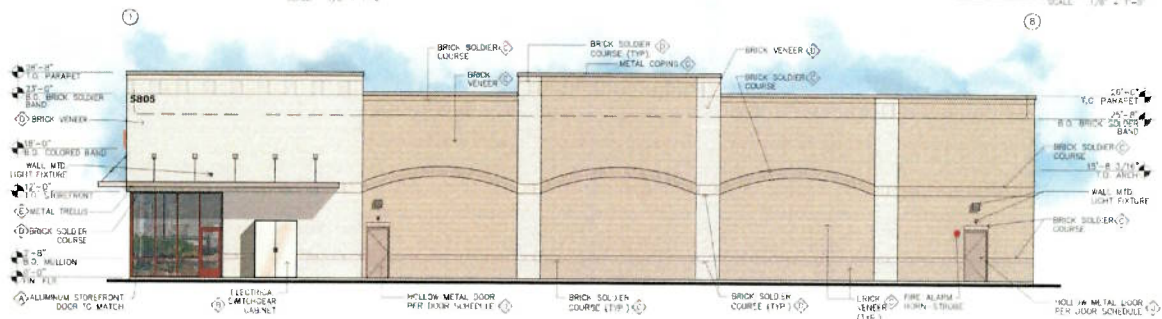
NORTH ELEVATION
SCALE: 1/8" = 1'-0"

SOUTH ELEVATION
SCALE: 1/8" = 1'-0"

FINISH LEGEND

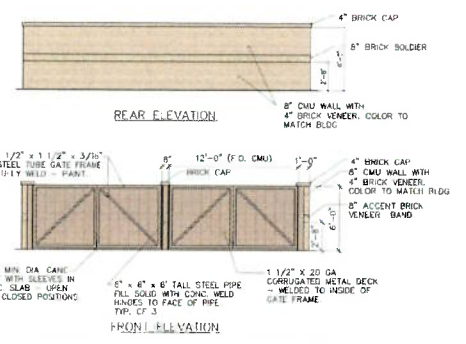
- COLOR / FINISH NOTES:**
- ① MANTLE TUBES: STAINLESS STEEL TO COLOR TO MATCH DURABOND LOADPST AL "DANNER REC"
 - ② PAINT: SHERWIN WILLIAMS SW 6113 "ADULTICE WHITE"
 - ③ BRICK VENEER BY INTERSTATE BRICK "MIDWIND"
 - ④ BRICK VENEER BY INTERSTATE BRICK "TROPIC WHITE"
 - ⑤ METAL TRELLIS PAINTED SW 2827 "COLONIAL REVIVAL STONE"
 - ⑥ RESERVED
 - ⑦ METAL COPING - FACTORY PAINTED, FACTORY FINISH TO MATCH SW 2827 "COLONIAL REVIVAL STONE"
 - ⑧ RESERVED
 - ⑨ BOLLARDS PAINTED SW 2827 "COLONIAL REVIVAL STONE"
 - ⑩ HOLLOW METAL: DOORS PAINTED SW 2827 "COLONIAL REVIVAL STONE"

GENERAL NOTE:
 A. DISCOUNT TIRE BUILDING SIGNAGE UNDER SEPARATE PERMIT
 B. ADDRESS SIGN AND LOCATION PER LOCAL CITY CODE



EAST ELEVATION
SCALE: 1/8" = 1'-0"

WEST ELEVATION
SCALE: 1/8" = 1'-0"



REAR ELEVATION

FRONT ELEVATION

TRASH ENCLOSURE PLAN / ELEVATIONS
SCALE: 1/8" = 1'-0"



THE PUBLIC PROPERTY OF ARCHITECTURAL RESOURCE TEAM INC. THIS DRAWING IS ISSUED WITHOUT OTHER CONSIDERATION THAN THE AGREEMENT AND CONDITIONS STATED IN THE REVISIONS SHEET. COPIES OR OTHER REPRODUCTIONS OF THIS DRAWING OR ANY PART THEREOF ARE STRICTLY PROHIBITED WITHOUT THE WRITTEN PERMISSION OF ARCHITECTURAL RESOURCE TEAM INC. ANY REVISIONS TO THIS DRAWING WILL BE MADE BY A REVISION SHEET. ANY REVISIONS TO THIS DRAWING WILL BE MADE BY A REVISION SHEET. ANY REVISIONS TO THIS DRAWING WILL BE MADE BY A REVISION SHEET.

CONCEPTUAL ELEVATIONS
 5805 STATE BRIDGE RD
 JOHNS CREEK, FULTON COUNTY, GA 30097



1035 e. cedar school rd.
 johns creek, ga 30097
 404-307-5399
 www.artteam.com

Sheet No.
A4

REV. 1
 DATE: 11.14.2018
 JOB No.: GAA 11157
 DRAWN BY: AJ