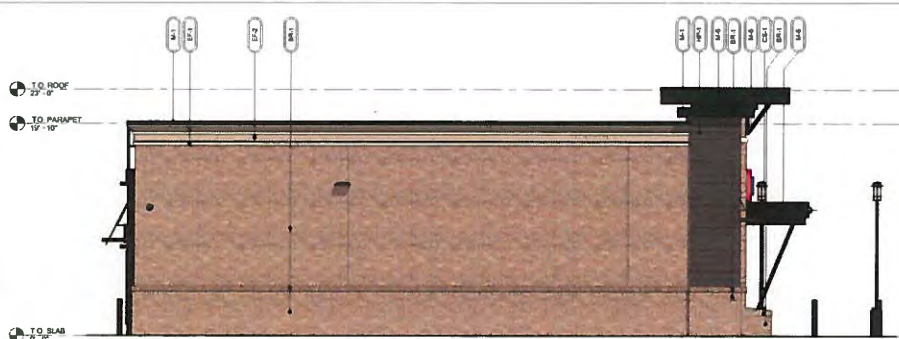


4 RIGHT ELEVATION  
3/16" = 1'-0"

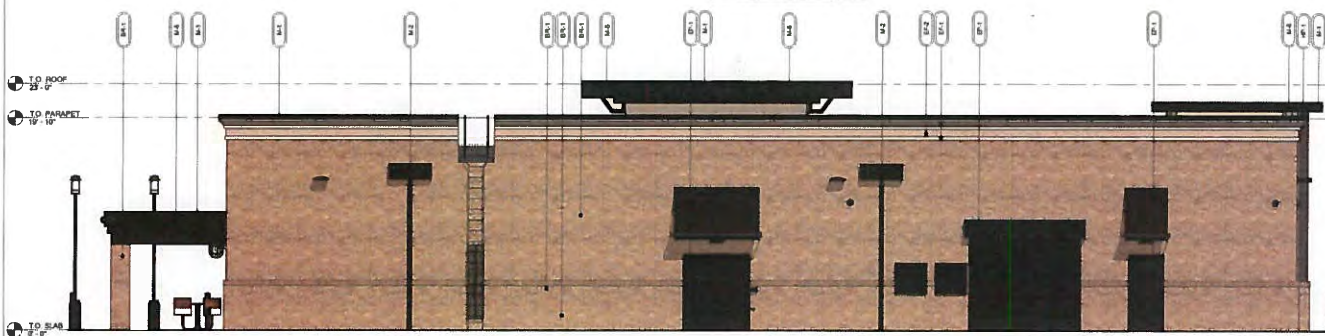
RIGHT ELEVATION (ENTRY)			
MATERIAL	SQ. FOOT.	% OF ELEVATION	1,208 TOTAL SF
STONE	2	0%	
BRICK	734	60%	
EPS	112	9%	
GLAZING	62	5%	
METAL	230	19%	
WOOD	0	0%	



3 LEFT ELEVATION  
3/16" = 1'-0"

LEFT ELEVATION (WDR-ENTRY)			
MATERIAL	SQ. FOOT.	% OF ELEVATION	1,208 TOTAL SF
STONE	2	0%	
BRICK	863	70%	
EPS	99	8%	
GLAZING	0	0%	
METAL	84	7%	
WOOD	75	6%	

ELEVATION	FINISH	DIMENSIONS	AREA
FRONT	RT PARALLELOGRAM	13'-56" x 3'-2"	40 SF
	BANNER	7'-8" x 5'-6"	42 SF



2 REAR ELEVATION  
3/16" = 1'-0"

REAR ELEVATION			
MATERIAL	SQ. FOOT.	% OF ELEVATION	2,118 TOTAL SF
STONE	0	0%	
BRICK	1,570	74%	
EPS	182	9%	
GLAZING	0	0%	
METAL	345	16%	
WOOD	15	1%	



1 FRONT ELEVATION  
3/16" = 1'-0"

FRONT ELEVATION			
MATERIAL	SQ. FOOT.	% OF ELEVATION	2,170 TOTAL SF
STONE	5	0%	
BRICK	1,763	80%	
EPS	181	8%	
GLAZING	331	15%	
METAL	179	8%	
WOOD	211	10%	

**EXTERIOR MATERIAL SCHEDULE**

AW-1	ALUMINUM AWNING	SELECTED BY RACETRAC
BR-1	BORAL	LAVIWOOD BRICK
CB-1	CAST STONE	MORTAR COLOR "LIGHT BUFF"
CS-1	SCENTIMENTAL CAST STONE OR APPROVED OTHER	MATCH BORAL TURCAN UNTEL CHAMPAGNE COLOR "LIGHT BUFF" SEAL WITH (SL-3) SEALANT
CE-1	CEMENT BOARD	MATCH BORAL TURCAN UNTEL CHAMPAGNE
HP-1	JAMES HARDIE	ARTISAN V GROOVE SHING
EP-1	EP-1	PAINT SHERWIN WILLIAMS SEALSKIN #795
EF-1	STO	STO THERMI CI
EF-2	STO	STO THERMI CI
GL-1	GLAZING	1" NON-IMPACT RATED INSULATED GLAZING
GL-2	GLAZING	1" NON-IMPACT RATED ACID ETCHED INSULATED GLAZING
M-1	METAL	PREPRESSED 2-PIECE COMPRESSION METAL COVER
M-2	METAL	COLOR DARK BRONZE
M-3	METAL	PREPRESSED 2-PIECE COMPRESSION METAL COVER
M-4	METAL	COLOR DARK BRONZE
M-5	METAL	PREPRESSED 2-PIECE COMPRESSION METAL COVER
M-6	METAL	COLOR DARK BRONZE
M-7	METAL	PREPRESSED 2-PIECE COMPRESSION METAL COVER
M-8	METAL	COLOR DARK BRONZE
PAINT	EP-1	SHERWIN WILLIAMS EXTERIOR PAINT TO MATCH DARK BRONZE
ROOFING	DURO	DUNGLAET
WINDOW FILM	WF-1	WINDOW FILM: 3M PRESTIGE TO SOLAR FILM
WINDOW FILM	WF-2	WINDOW FILM: OPAQUE



**RaceTrac.**  
DESIGN PROFESSIONALS

**ISSUE/REVISION RECORD**

DATE	DESCRIPTION
SPR. NO. 0107	DATE 02.16.18

**RaceTrac.**  
RACETRAC PETROLEUM, INC.  
200 KALLAN PARKWAY, SUITE 200  
ATLANTA, GEORGIA 30339  
(770) 431-7888

**PROJECT NAME**  
ANYTOWN, CITY

**CITY**  
STATE

**RACETRAC STORE NUMBER**  
#000

**PROTOTYPE NUMBER**  
2018 BR-BH-MD-M 0107

**PROFESSIONAL SEAL**

**PROJECT NUMBER**  
XXXXXXXXXX

**SHEET TITLE**  
EXTERIOR ELEVATIONS

**SHEET NUMBER**

**A300B**

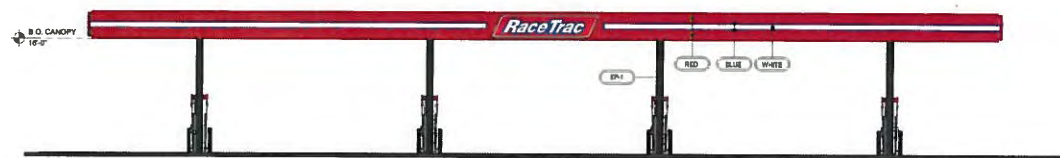
RECEIVED

OCT 02 2018

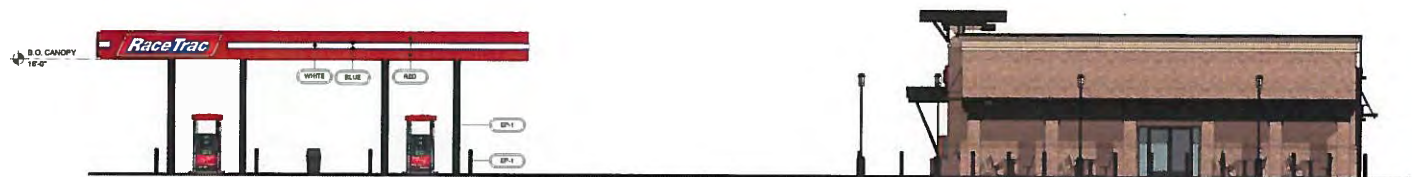
City of Johns Creek  
Community Development

RZ-19-003  
VC-19-003-01

**RaceTrac.**  
CORPORATE STORES  
THESE PLANS ARE SUBJECT TO FEDERAL  
COPYRIGHT LAWS. ANY USE OF SAME  
WITHOUT THE EXPRESS WRITTEN  
PERMISSION OF RACETRAC PETROLEUM,  
INC. IS PROHIBITED. © 2018 RACETRAC  
PETROLEUM, INC.  
DESIGN PROFESSIONALS



2 CANOPY FRONT ELEVATION  
1/8" = 1'-0"



1 CANOPY RIGHT ELEVATION  
1/8" = 1'-0"

ISSUE/REVISION RECORD

DATE DESCRIPTION  
SPR NO. DATE

**RaceTrac.**  
RACETRAC PETROLEUM, INC.  
200 CALLENA PARKWAY, SUITE 100  
ALPHARETTA, GEORGIA 30009  
(770) 481-7600

PROJECT NAME  
**ANYTOWN, CITY**

CITY  
STATE 00000  
9999 ADDRESS

RACETRAC STORE NUMBER  
**#000**

PROTOTYPING NUMBER & S.K.  
**2018 BR-NH-MQ-NH**

PLAN MODIFICATION NOTICE  
SPR NO. DATE

STANDARD PLAN INCLUDES (SPR) SHOWN THE  
PROPERTY OWNER'S BEST INTERESTS. THE  
LISTED SPR REPRESENTS THE LISTED  
MODIFICATIONS INCORPORATED TO THIS  
PROPERTY'S ORIGINAL SET AS SHOWN ON THESE  
THESE PLANS. ANY CHANGES TO THESE PLANS  
MAY BE MADE ONLY AFTER THE ORIGINAL DESIGN  
IS REVIEWED AND APPROVED BY THE  
DESIGN PROFESSIONALS. ANY  
CONSTRUCTION SHALL BE SUBJECT  
RELATIVE TO INCORPORATED CHANGES.

PROFESSIONAL SEAL

FUEL CANOPY MATERIAL SCHEDULE

ID	MANUF.	MATERIAL	COMMENTS
FASCIA			
BLUE			2" BLUE STRIPE
RED			REFER TO SPECIFICATION CHART ON SHEET 100
PAINT			
WHITE			8" WHITE STRIPE
EP-1	SHERWIN WILLIAMS	EXTERIOR PAINT TO MATCH BY #7020 "BLACK FOX"	

STANDARD CANOPY FASCIA COLOR  
SPECIFICATION CHART

COLOR CALLOUT	CANOPY MANUFACTURER	STANDARD COLOR SPECIFICATION
'TAN'	LANE CANOPIES	ETT TAN FASCIA
	MAGEE CANOPIES	ETT TAN FASCIA
	MADISON CANOPIES	PUEBLO TAN FASCIA
'RED'	LANE CANOPIES	TRD RED FASCIA
	MAGEE CANOPIES	TRD RED FASCIA PROGRAM RED
	MADISON CANOPIES	PROGRAM RED FASCIA

PROJECT NUMBER  
XXXXXXXXXX

SHEET TITLE  
**FUEL CANOPY  
ELEVATIONS**

SHEET NUMBER

**100**

RECEIVED

OCT 02 2018

City of Johns Creek  
Community Development

RZ-19-003  
VC-19-003-01

DUMPSTER MATERIAL SCHEDULE			
ID	MANUFACTURER	MATERIAL	COMMENTS
BRCK			
BR-1	BORAL	LAREDO BRICK	MORTAR COLOR "LIGHT BUFF"
METAL			
M-1		"PRE-FINISHED" 3-PIECE COMPRESSION METAL COVER	METAL TO MATCH STOREFRONT COLOR: DARK BRONZE
PAINT			
EP-1	SHERWIN WILLIAMS	EXTERIOR PAINT TO MATCH SW #700 "BLACK FOX"	
TRK1	TRKX	SELECT COMPOSITE	WOODLAND BROWN

**RaceTrac.**  
CONTRACTOR NOTICE  
 THESE PLANS ARE SUBJECT TO FEDERAL COPYRIGHT LAWS; ANY USE OF SAME WITHOUT THE EXPRESS WRITTEN PERMISSION OF RACETRAC PETROLEUM, INC. IS PROHIBITED. ©2018 RACETRAC PETROLEUM, INC.

DESIGN PROFESSIONALS

ISSUE/REVISION RECORD	
DATE	DESCRIPTION

**RaceTrac.**  
RACETRAC PETROLEUM, INC.  
 200 BALCONIA PARKWAY WEST  
 SUITE 200  
 ATLANTA, GEORGIA 30339  
 (770) 431-7800

PROJECT NAME  
**ANYTOWN, CITY**

RACETRAC STORE NUMBER

PHOTOTYP SERIES 9.5K 2.0

PLAN MODIFICATION NOTICE  
 SPM NO. DATE

STANDARD PLAN DETAIL(S) DOES NOT APPLY TO THIS PROJECT. CONSULT THE LATEST REVISION(S) FOR THE LATEST INFORMATION. THE OWNER, ARCHITECT, ENGINEER, CONTRACTOR AND SUPPLIER SHALL BE RESPONSIBLE FOR VERIFYING THE ACCURACY OF THE INFORMATION PROVIDED ON THESE PLANS. THE USER OF THESE PLANS SHALL BE RESPONSIBLE FOR VERIFYING THE ACCURACY OF THE INFORMATION PROVIDED ON THESE PLANS. THE USER OF THESE PLANS SHALL BE RESPONSIBLE FOR VERIFYING THE ACCURACY OF THE INFORMATION PROVIDED ON THESE PLANS.

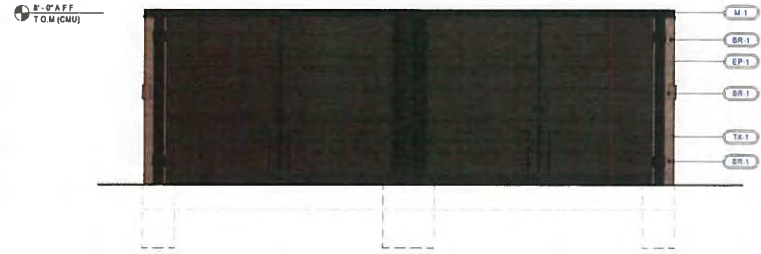
PROFESSIONAL SEAL

PROJECT NUMBER  
2018157 02

SHEET TITLE  
**DUMPSTER ENCLOSURE ELEVATIONS**

SHEET NUMBER

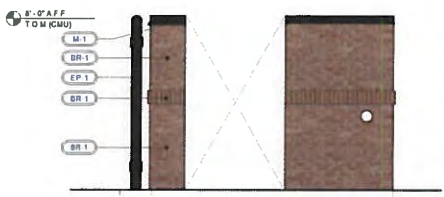
**010**



5 DUMPSTER ENCLOSURE FRONT ELEVATION  
36' x 1'-0"



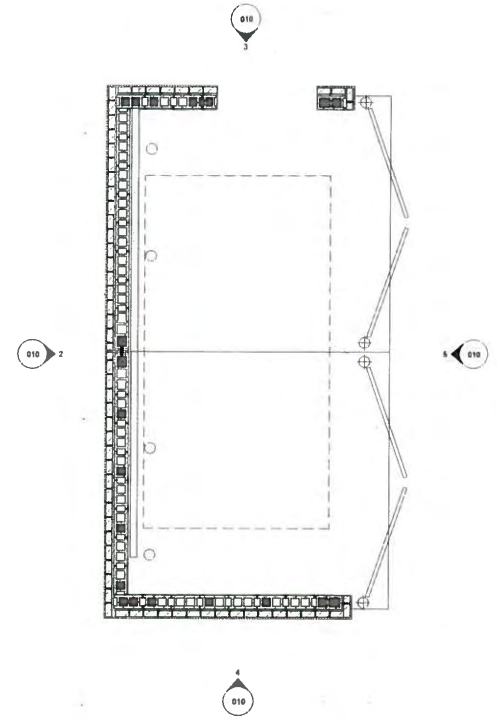
4 DUMPSTER ENCLOSURE LEFT ELEVATION  
36' x 1'-0"



3 DUMPSTER ENCLOSURE RIGHT ELEVATION  
36' x 1'-0"



2 DUMPSTER ENCLOSURE REAR ELEVATION  
36' x 1'-0"



1 DUMPSTER ENCLOSURE PLAN  
36' x 1'-0"

RECEIVED

OCT 02 2018

City of Johns Creek  
Community Development

RZ-19-003  
VC-19-003-01

