

PRELIMINARY NOT FOR CONSTRUCTION



MAXWELL-REDDICK ARCHITECTS & PLANNERS

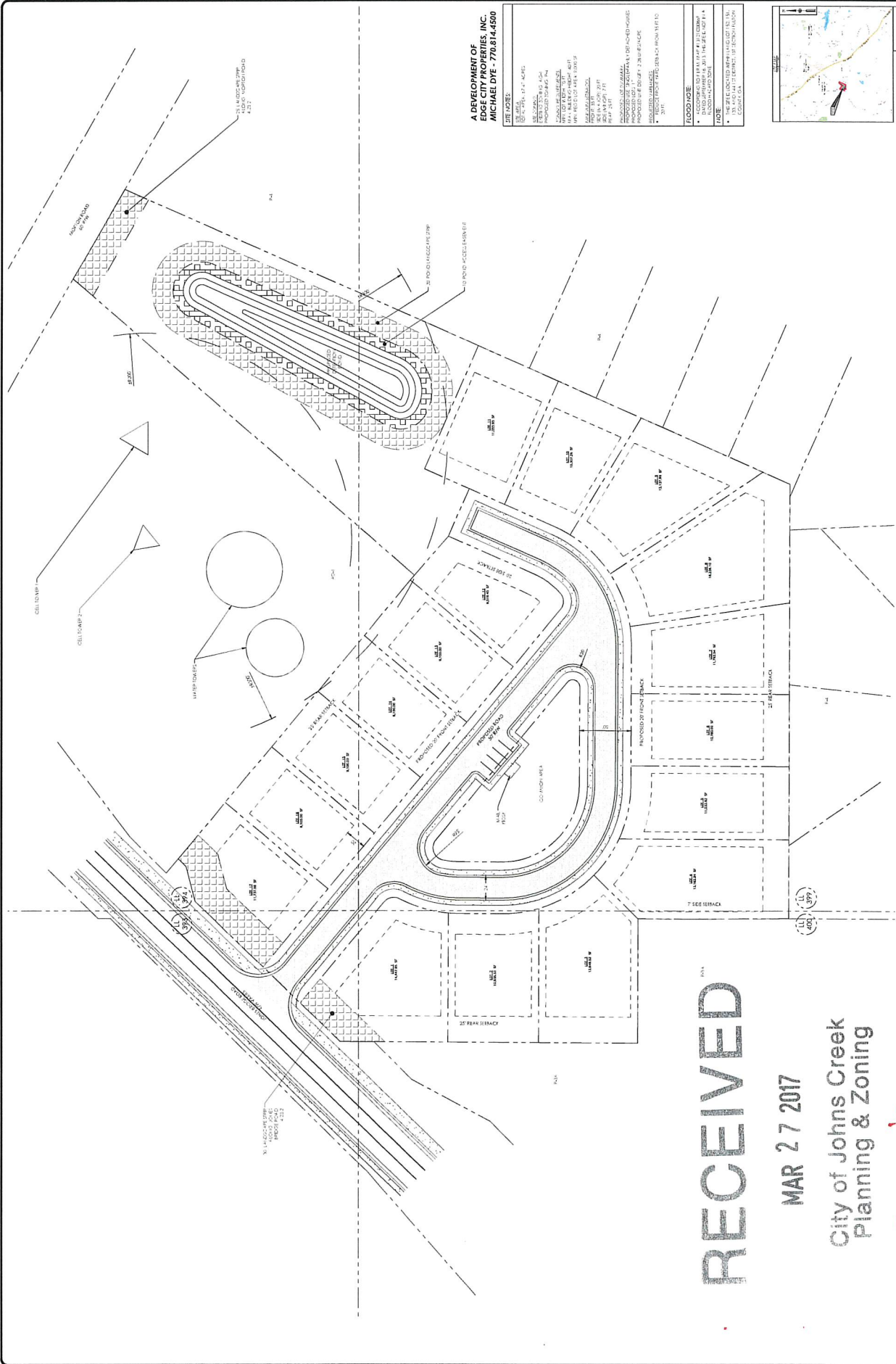
1100 NORTON ROAD SUITE 100 JOHN'S CREEK, GA 30145

DATE: 01/10/17  
DRAWN BY: JRM  
CHECKED BY: JRM  
SCALE: AS SHOWN

PROPOSED RESIDENTIAL DEVELOPMENT  
10225 JONES BRIDGE ROAD  
JOHNS CREEK, GA

DATE: JAN 04, 2017  
JOB NO.: 2016A066  
SCALE AS SHOWN

DRAWING NUMBER  
C0.0  
1 OF 2 SHEETS



A DEVELOPMENT OF  
IDECITY PROPERTIES, INC.  
MICHAEL DYE - 770.631.4450

DATE: 01/10/17  
DRAWN BY: JRM  
CHECKED BY: JRM  
SCALE: AS SHOWN

PROPOSED RESIDENTIAL DEVELOPMENT  
10225 JONES BRIDGE ROAD  
JOHNS CREEK, GA



GRAPHIC SCALE  
1" = 40'  
0 40 80 120  
FOOT

RECEIVED

MAR 27 2017

City of Johns Creek  
Planning & Zoning

Revision

RZ-17-006  
17-222