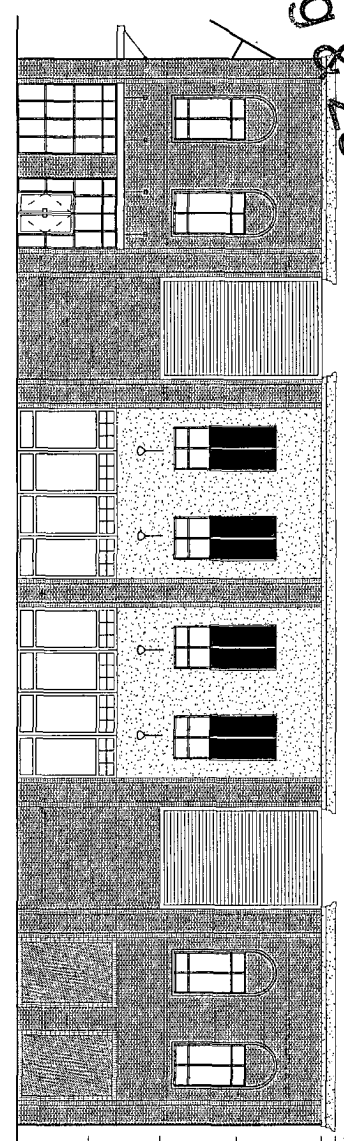


RECEIVED

NOV 01 2016

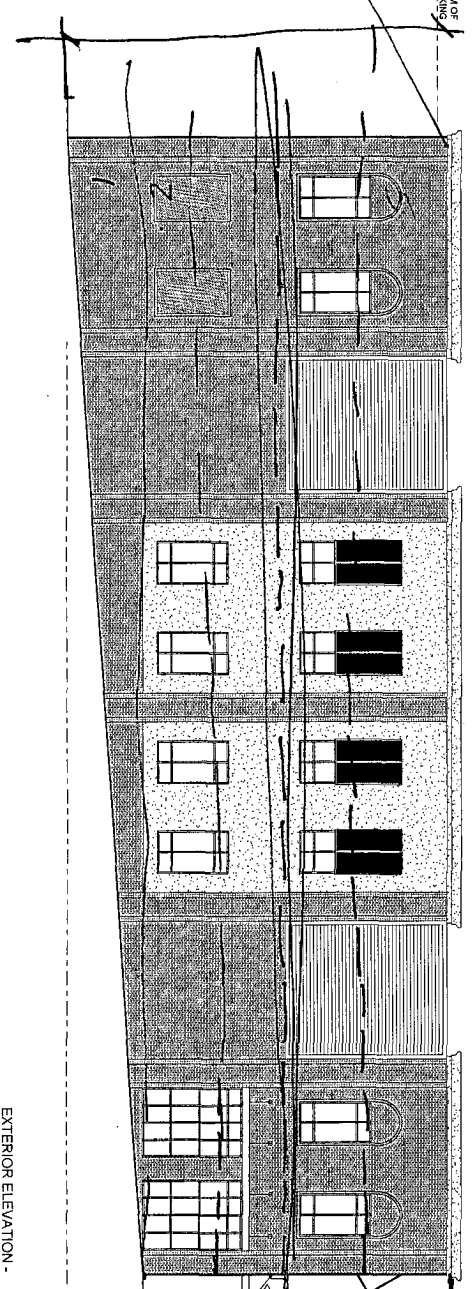
12-16-007

City of Johns Creek
Planning & Zoning



EXTERIOR ELEVATION - SOUTH
1/8" = 1'-0"

- TOP OF PARAPET 47'-8"
- TOP OF PARAPET 47'-8"
- LOW 42'-8"
- THIRD FLOOR 30'-8"
- SECOND FLOOR 20'-0"
- MEZZANINE 10'-8"
- FIRST FLOOR 0'-0"



EXTERIOR ELEVATION - WEST
1/8" = 1'-0"

- TOP OF PARAPET 44'-8"
- TOP OF PARAPET 44'-8"
- LOW 42'-8"
- THIRD FLOOR 30'-8"
- SECOND FLOOR 20'-0"
- MEZZANINE 10'-8"
- FIRST FLOOR 0'-0"
- BASEMENT LEVEL 10'-0"

44'-8"
10'-8"
55'-4"

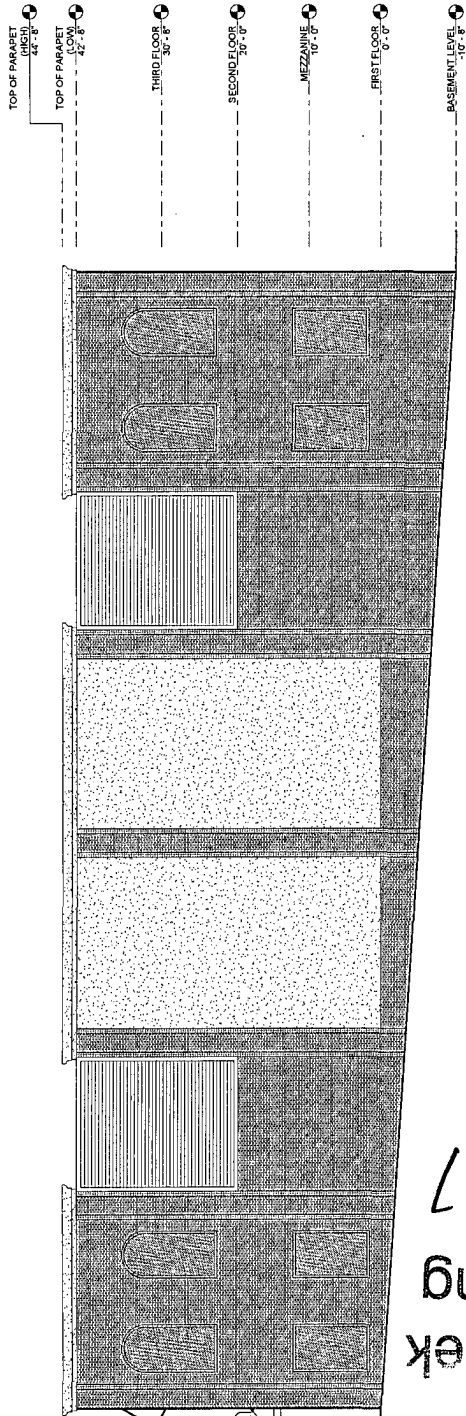
55'-4"
55'-4"

RECEIVED

NOV 01 2016

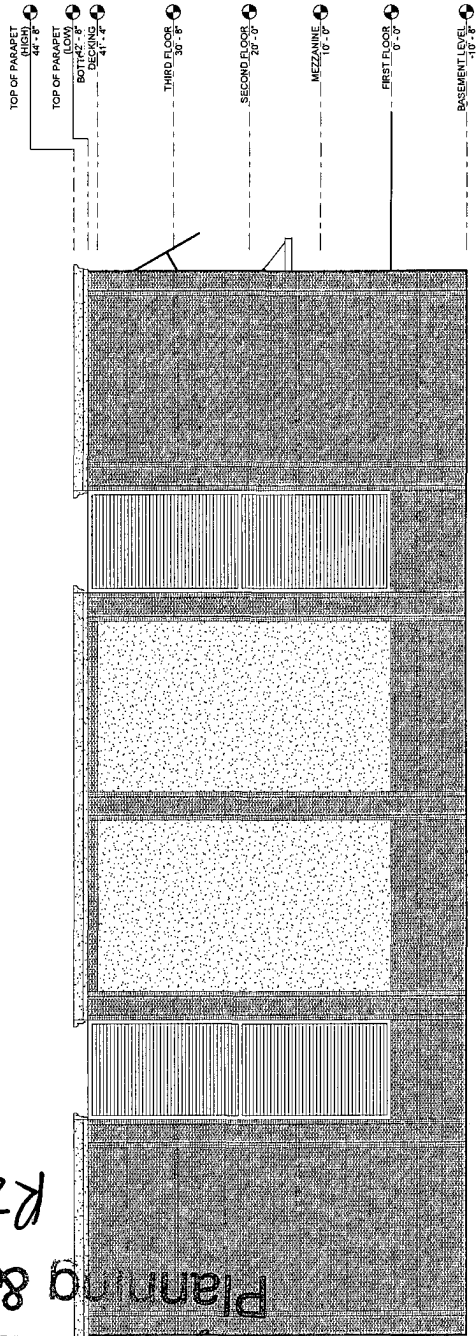
City of Johns Creek
Planning & Zoning

RZ-16-007



EXTERIOR ELEVATIONS

EXTERIOR ELEVATION - EAST
1/8" = 1'-0"



EXTERIOR ELEVATION - NORTH
1/8" = 1'-0"