



Memorandum

Date: November 1, 2019

From: Marc R. Acampora, PE

Subject: Trip Generation for Proposed Dentist Office
8125 McGinnis Ferry Road, City of Suwanee, Georgia

RZ-20-002
RECEIVED

NOV 12 2019

City of Johns Creek
Community Development

The trip generation was calculated for a proposed dentist office in the City of Suwanee, Georgia. The site is located at 8125 McGinnis Ferry Road as shown in Figure 1. The proposed site plan is presented in Figure 2.



Figure 1 – Site Location Map

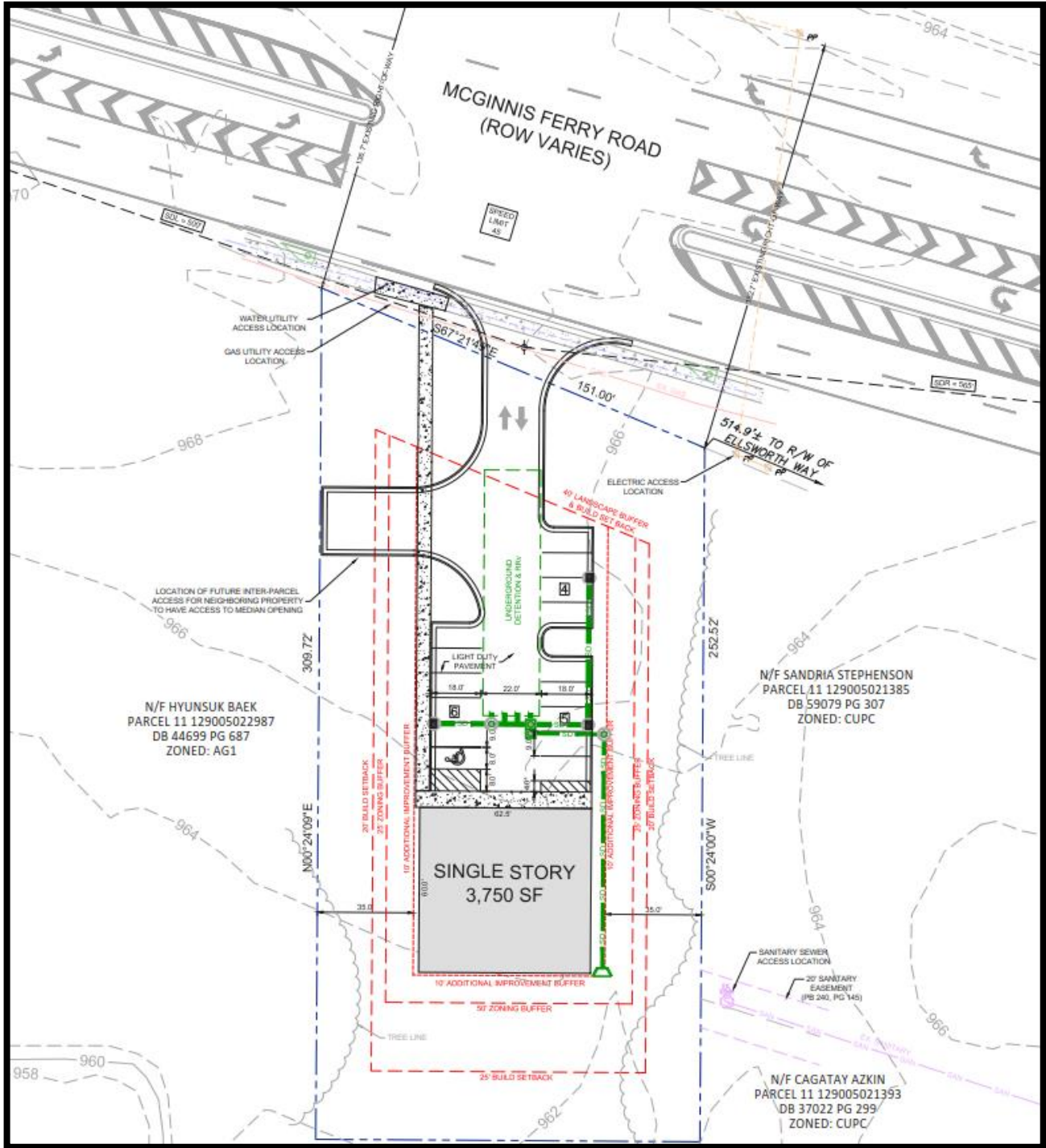


Figure 2 – Site Plan

The site will be developed with a single-story, 3,750 square foot dentist office. Full-movement vehicular access will be provided at an existing median break on McGinnis Ferry Road aligning with Village Place (the entrance to a residential subdivision).

The volume of traffic that will be generated by the proposed dentist office was calculated using the equations in the Institute of Transportation Engineers (ITE) *Trip Generation Manual*, 10th Edition (the current edition). ITE Land Use 720 – Medical-Dental Office Building was chosen as representative of the proposed development. The trip generation is summarized in Table 1.

Table 1 – Dentist Office Trip Generation

Land Use	ITE Code	Size	A.M. Peak Hour			P.M. Peak Hour			24-Hour
			In	Out	Total	In	Out	Total	2-Way
Medical-Dental Office Building	720	3,750 ft ²	9	3	12	4	11	15	56

The proposed dentist office will generate 12 new trips in the morning peak hour, 15 new trips in the evening peak hour, and 56 new daily trips.

RZ-20-002
RECEIVED
NOV 12 2019
City of Johns Creek
Community Development