

ACM PANEL GENERAL NOTES

- ALL ACM PANELS MUST BE ANCHORED TO MIN. 16 GA. METAL STUD FRAMING - REFER TO STRUCTURAL. METAL STUD FRAMING NOT BY CA SYSTEMS.
- METAL STUDS MUST ALIGN WITH PANEL JOINTS AS REQUIRED FOR METAL COMPOSITE PANEL ATTACHMENT.
- FIXED STUDS MAY BE USED TO SUPPORT METAL COMPOSITE PANELS (G.C. TO COORDINATE)
- 5/8" GYP. SHEATHING AND/OR GLASS MAT SHEATHING WILL NOT SUPPORT METAL COMPOSITE PANEL ATTACHMENT. (SHEATHING NOT BY CA SYSTEMS).
- ALL FLASTOCK FABRICATED FLASHING REQUIRED FOR METAL COMPOSITE PANEL DETAILS TO BE PREFINISHED ALUMINUM. COLOR TO MATCH PANELS U.N.O.
- ALL DIMENSIONS AND QUANTITIES ARE TO BE FIELD VERIFIED PRIOR TO THE FABRICATION (RELEASE) OF ANY & ALL METAL COMPOSITE PANEL AND ASSOCIATED FLASHINGS.
- ALL SKYWARD ACM PANEL JOINTS TO HAVE BACKER ROD AND CAULK, APPLY DOWN PAST WD. BLOCKING (TYP.)
- USE BACKER ROD AND CAULK AT ALL VERTICAL PANEL END (JAMB) JOINT CONDITIONS AT DISSIMILAR MATERIALS (IE STUCCO, WINDOW MULLION)

FINISH SCHEDULE - EXTERIOR

EXTERIOR FINISH	IDENTIFICATION	MANUFACTURER	COLOR	COMMENTS
PREFINISHED ALUMINUM STOREFRONT SYSTEM	AL-1	KAWNEER	DARK BRONZE	
EXTERIOR INSULATION FINISH SYSTEM	EIFS NO.1	DRYVIT	402U	PROVIDE COLOR MATCH BY BENJAMIN MOORE, 5" THICK
EXTERIOR PAINT	EX-1	BENJAMIN MOORE	402U	
MODULAR STANDARD BRICK VENEER	EXT - 1	ACME BRICK	QUORUM	MORTAR MANUFACTURER: COOSA, MORTAR COLOR: COOSA OLD LIME PUTTY

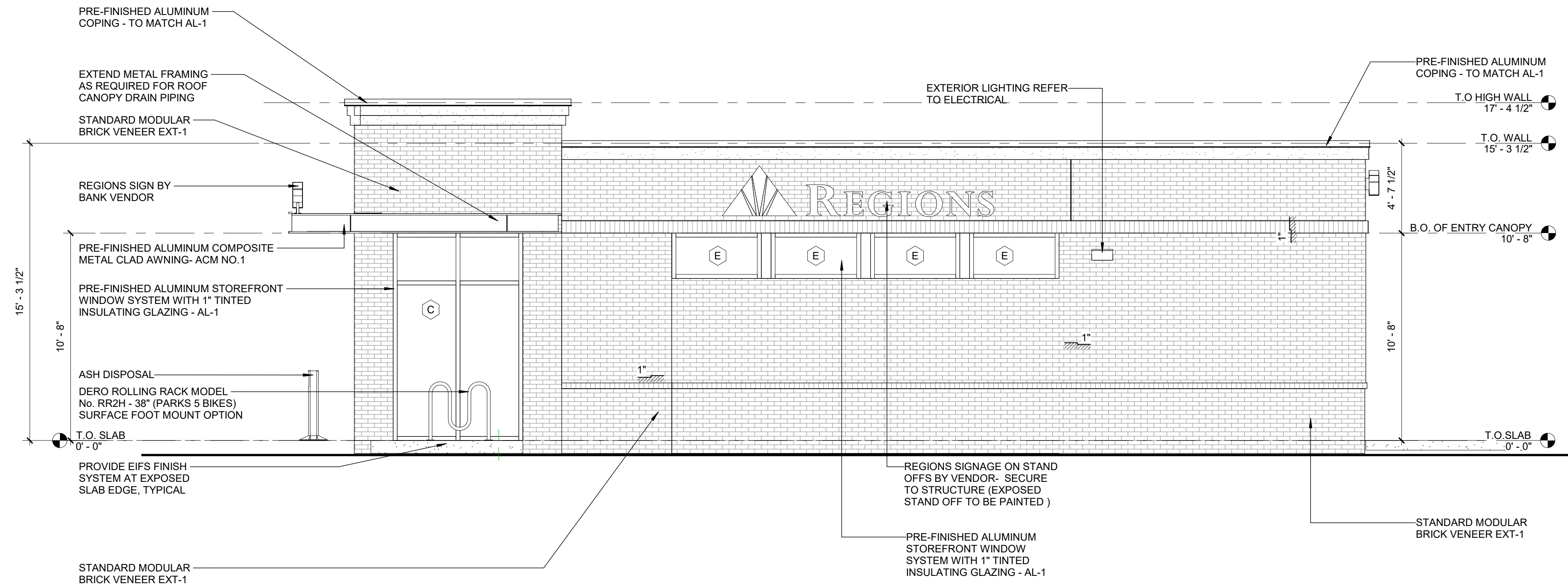
RZ-20-005
VC-20-005-01
RECEIVED
MAR 10 2020
 City of Johns Creek
 Community Development



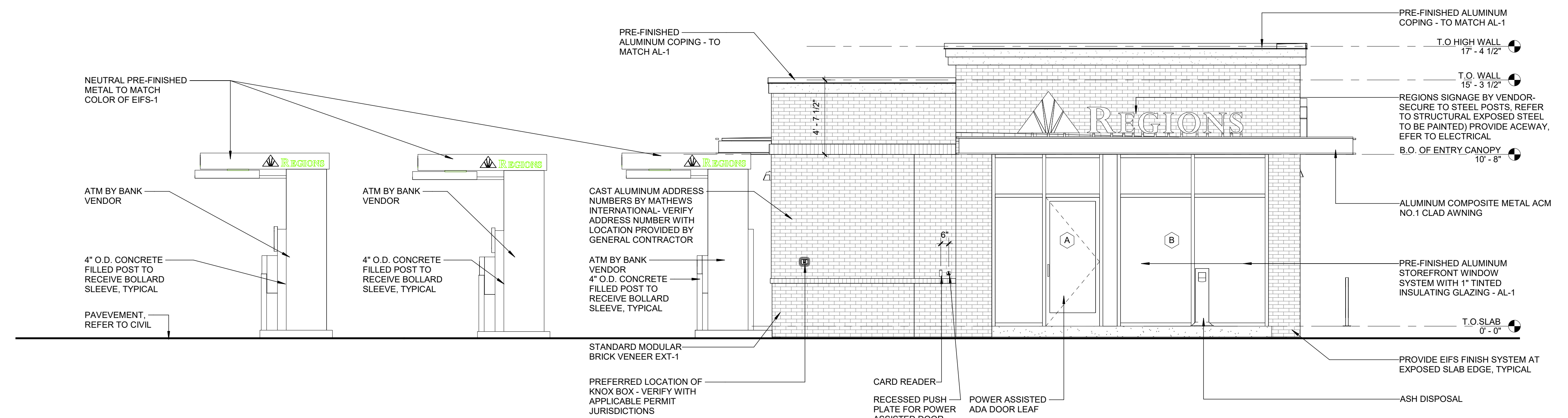
2100 1st Ave. North
 Ste. 100
 Birmingham, AL 35203
 P: 205-252-8222
 Lic. #: AA-0003590
 W: www.bdgip.com



REGIONS STATE BRIDGE
 5950 STATE BRIDGE ROAD
 JOHNS CREEK, GEORGIA 30097
 REGIONS PROJECT #GANO1931751N



WEST ELEVATION SCALE 1/4" = 1'-0" 2



NORTH ELEVATION SCALE 1/4" = 1'-0" 1

THESE DRAWINGS AND PLANS, ANY REPRODUCTION THEREOF, AND ANY CAD OR ELECTRONIC FILE OF THESE DRAWINGS AND PLANS (HEREINAFTER "PLANS") ARE THE SOLE AND EXCLUSIVE PROPRIETARY PROPERTY OF BDG ARCHITECTS, AND MAY NOT BE REPRODUCED, PUBLISHED, MICHANGED OR USED IN ANY WAY WITHOUT THE EXPRESS WRITTEN PERMISSION OF BDG ARCHITECTS. USE OF THESE PLANS FOR CONSTRUCTION SHALL BE CONSIDERED ACCEPTANCE OF THE TERMS CONTAINED HEREIN AND THE LIABILITY AND CONSTRUCTION OF THE PLANS. THE PLANS SHALL NOT BE SCALED OR MODIFIED FOR ANY PURPOSE WITHOUT THE EXPRESS WRITTEN APPROVAL OF BDG ARCHITECTS. ANY CHANGES TO THESE PLANS, REGARDLESS OF HOW MINOR, WITHOUT THE EXPRESS WRITTEN APPROVAL OF BDG ARCHITECTS, ANY CHANGES TO THESE PLANS FOR ANY REASON, BY ANY PERSON OTHER THAN BDG ARCHITECTS, OR ANY AUTOMATICALLY TOOK ANY DISCREPANCIES OR CONFLICTS TO BE REFERRED IMMEDIATELY TO BDG ARCHITECTS FOR CLARIFICATION PRIOR TO COMMENCING WITH THE WORK. FAILURE TO HEAR DISCREPANCIES OR CONFLICTS TO BDG ARCHITECTS PRIOR TO PERFORMING WORK SHALL RESULT IN THE WAIVER OF ANY CLAIMS OR DAMAGES ASSOCIATED WITH THE DISCREPANCIES OR CONFLICTS. THE CONTRACTOR IS RESPONSIBLE FOR THE COORDINATION, SCHEDULING, AND CONFORMANCE OF ITS WORK AND ALL WORK PERFORMED BY SUBCONTRACTORS OR OTHER TRADES WITH THE DESIGN DOCUMENTS.

Revision Number	BY	DATE	DESCRIPTION

PROJECT INFORMATION BLOCK
 JOB # 203203
 DATE: 03-13-20
 DRAWN BY: BC
 CHECKED BY: MF

SHEET TITLE
EXTERIOR ELEVATIONS
SHEET NUMBER

A-200

ACM PANEL GENERAL NOTES

1. ALL ACM PANELS MUST BE ANCHORED TO MIN. 16 GA. METAL STUD FRAMING - REFER TO STRUCTURAL. METAL STUD FRAMING NOT BY CA SYSTEMS.
2. METAL STUDS MUST ALIGN WITH PANEL JOINTS AS REQUIRED FOR METAL COMPOSITE PANEL ATTACHMENT.
3. FIXED STUDS MAY BE USED TO SUPPORT METAL COMPOSITE PANELS (G.C. TO COORDINATE)
4. 5/8" GYP. SHEATHING AND/OR GLASS MAT SHEATHING WILL NOT SUPPORT METAL COMPOSITE PANEL ATTACHMENT. (SHEATHING NOT BY CA SYSTEMS).
5. ALL FLASTOCK FABRICATED FLASHING REQUIRED FOR METAL COMPOSITE PANEL DETAILS TO BE PREFINISHED ALUMINUM. COLOR TO MATCH PANELS U.N.O.
6. ALL DIMENSIONS AND QUANTITIES ARE TO BE FIELD VERIFIED PRIOR TO THE FABRICATION (RELEASE) OF ANY & ALL METAL COMPOSITE PANEL AND ASSOCIATED FLASHINGS.
7. ALL SKYWARD ACM PANEL JOINTS TO HAVE BACKER ROD AND CAULK, APPLY DOWN PAST WD. BLOCKING (TYP.)
8. USE BACKER ROD AND CAULK AT ALL VERTICAL PANEL END (JAMB) JOINT CONDITIONS AT DISSIMILAR MATERIALS (IE STUCCO, WINDOW MULLION)

FINISH SCHEDULE - EXTERIOR

EXTERIOR FINISH	IDENTIFICATION	MANUFACTURER	COLOR	COMMENTS
PREFINISHED ALUMINUM STOREFRONT SYSTEM	AL-1	KAWNEER	DARK BRONZE	
EXTERIOR INSULATION FINISH SYSTEM	EIFS NO.1	DRYVIT	402U	PROVIDE COLOR MATCH BY BENJAMIN MOORE, 5" THICK
EXTERIOR PAINT	EX-1	BENJAMIN MOORE	402U	
MODULAR STANDARD BRICK VENEER	EXT - 1	ACME BRICK	QUORUM	MORTAR MANUFACTURER: COOSA, MORTAR COLOR: COOSA OLD LIME PUTTY

RZ-20-005
VC-20-005-01
RECEIVED
MAR 10 2020

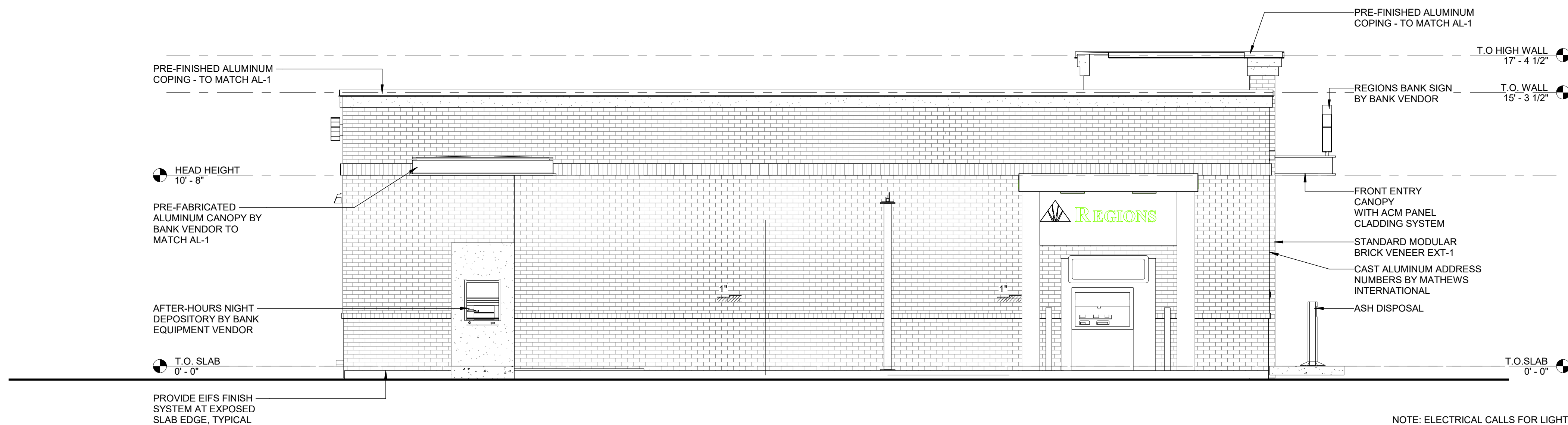
City of Johns Creek
Community Development



2100 1st Ave. North
Ste. 100
Birmingham, AL 35203
P: 205-252-8222
LIC. #JAA-0003590
W: www.bdgip.com



REGIONS STATE BRIDGE
5950 STATE BRIDGE ROAD
JOHNS CREEK, GEORGIA 30097
REGIONS PROJECT #GANO1931751N

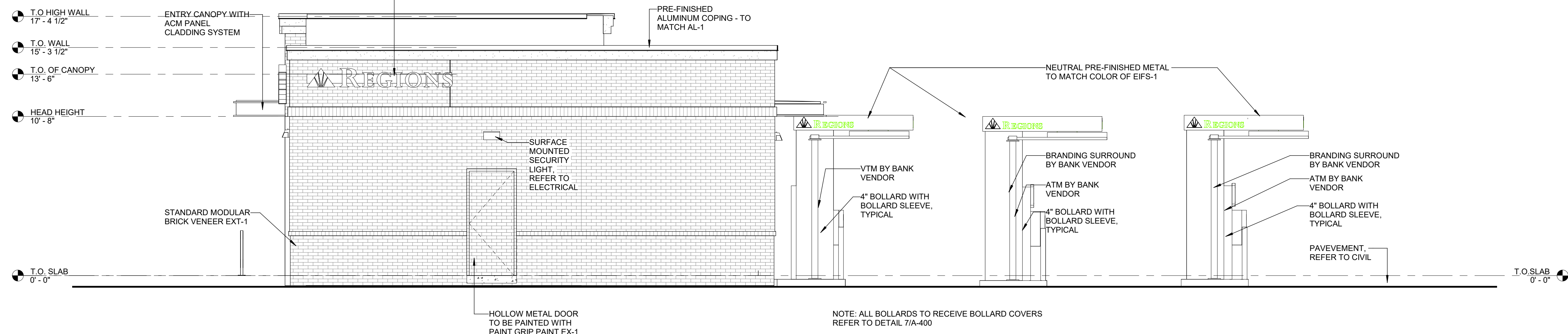


NOTE: ELECTRICAL CALLS FOR LIGHT TO BE @ 10' BUT LIGHT MOVES TO ABOVE BREAK.

EAST ELEVATION SCALE 1/4" = 1'-0" 2

NOTE:
GC TO VERIFY WITH SIGN VENDOR PRIOR TO CONSTRUCTION WHETHER OR NOT SIGN WILL BE INSTALLED AT THIS LOCATION.

REGIONS SIGNAGE ON RACEWAY BY BANK VENDOR- RACEWAY TO BE SURFACE MOUNTED AND SECURED THROUGH EIFS TO WOOD BLOCKING IN WALL- POWER TO BE RUN FROM ACCESSIBLE CEILING AROUND STRUCTURE TO SIGN



NOTE: ALL BOLLARDS TO RECEIVE BOLLARD COVERS REFER TO DETAIL 7/A-400

SOUTH ELEVATION SCALE 1/4" = 1'-0" 1

THESE DRAWINGS AND PLANS, ANY REPRODUCTION THEREOF, AND ANY CAD OR ELECTRONIC FILE OF THESE DRAWINGS AND PLANS (HEREINAFTER "PLANS") ARE THE SOLE AND EXCLUSIVE PROPERTY OF BDG ARCHITECTS, AND MAY NOT BE REPRODUCED, PUBLISHED, MIRRORED OR USED IN ANY WAY WITHOUT THE EXPRESS WRITTEN PERMISSION OF BDG ARCHITECTS. USE OF THESE PLANS FOR CONSTRUCTION SHALL BE CONSIDERED ACCEPTANCE OF THE TERMS CONTAINED HEREIN AND THE SUBMITTER AND CONTRACTOR (IF APPLICABLE) OF THE PLANS. THE PLANS SHALL NOT BE SCALED OR MODIFIED FOR ANY PURPOSE WITHOUT THE EXPRESS WRITTEN APPROVAL OF BDG ARCHITECTS. ANY CHANGES TO THESE PLANS, REGARDLESS OF HOW MINOR, WITHOUT THE EXPRESS WRITTEN APPROVAL OF BDG ARCHITECTS, ANY CONSTRUCTION EXECUTED FROM THESE PLANS WITHOUT THE EXPRESS WRITTEN APPROVAL OF BDG ARCHITECTS, OR ANY CHANGE IN THE SCOPE, DESIGN, OR INTENT OF THESE PLANS FOR ANY REASON, BY ANY PERSON OTHER THAN BDG ARCHITECTS SHALL AUTOMATICALLY VOID ANY DESIGNATED OBLIGATIONS. BDG ARCHITECTS MAY HAVE ON THE PROJECT, AND RESULT IN THE FULL AND COMPLETE RELEASE OF BDG ARCHITECTS FROM ANY LIABILITY, CLAIM, OR DAMAGES INCLUDING ERRORS AND OMISSIONS ARISING OUT OF OR RELATED TO THE PLANS. ANY DISCREPANCIES OR CONFLICTS IN THE PLANS SHALL BE REFERRED IMMEDIATELY TO BDG ARCHITECTS FOR CLARIFICATION PRIOR TO COMMENCING WITH THE WORK. FAILURE TO HERETOFORE WORK SHALL RESULT IN THE WAIVER OF ANY CLAIMS OR DAMAGES ASSOCIATED WITH THE DISCREPANCIES OR CONFLICTS. THE CONTRACTOR IS RESPONSIBLE FOR THE COORDINATION, SCHEDULING, AND CONFORMANCE OF ITS WORK, AND ALL WORK PERFORMED BY SUBCONTRACTORS OR OTHER TRADES WITH THE DESIGN DOCUMENTS.

Revision Number	BY	DATE	DESCRIPTION

PROJECT INFORMATION BLOCK
JOB # 203203
DATE 03-13-20
DRAWN BY: BC
CHECKED BY: MF

SHEET TITLE
EXTERIOR ELEVATIONS
SHEET NUMBER

A-201