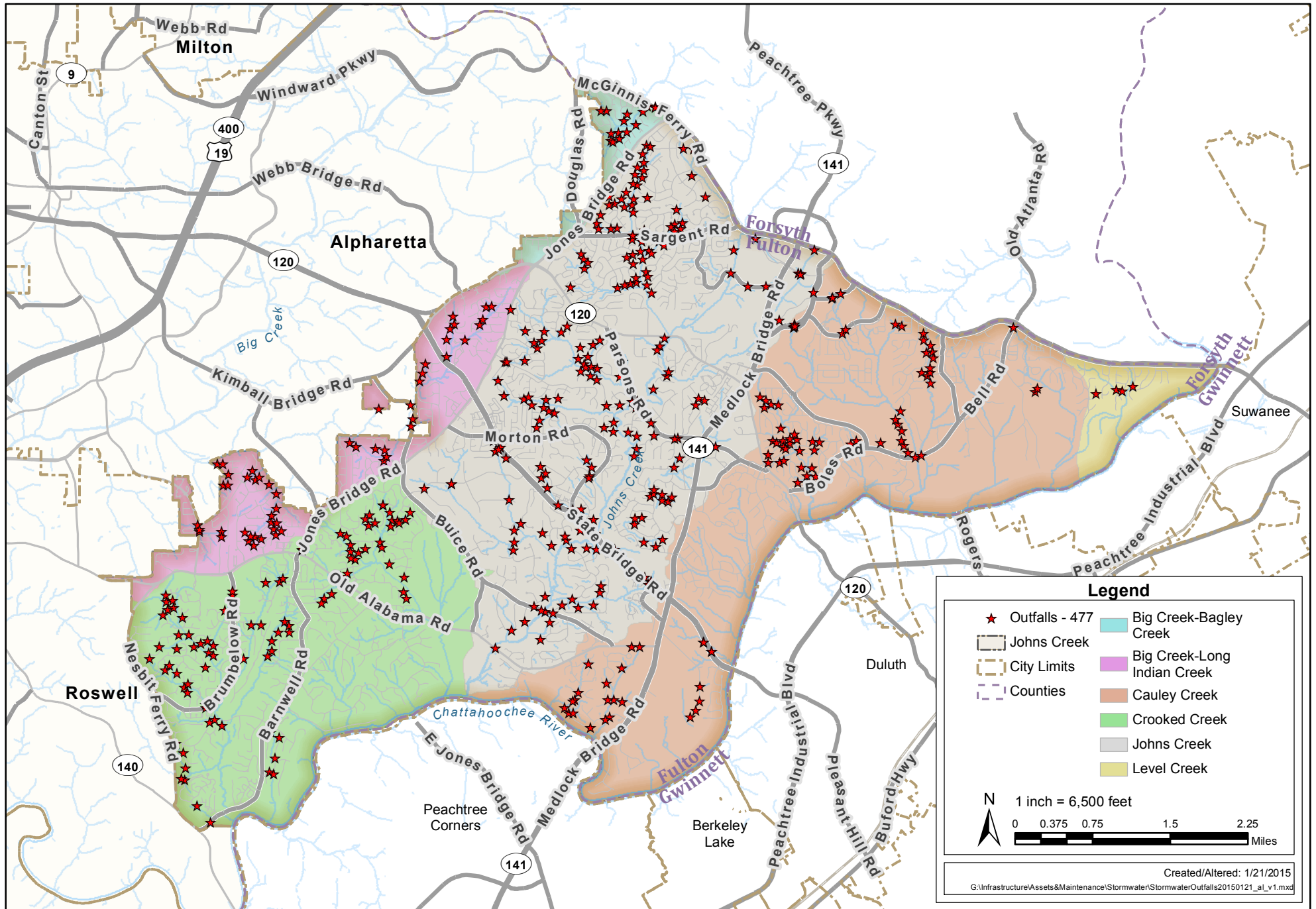


Stormwater Outfalls with Watersheds

December 2014



Legend

- ★ Outfalls - 477
- ▭ Johns Creek
- ▭ City Limits
- ▭ Counties
- ▭ Big Creek-Bagley Creek
- ▭ Big Creek-Long Indian Creek
- ▭ Cauley Creek
- ▭ Crooked Creek
- ▭ Johns Creek
- ▭ Level Creek

1 inch = 6,500 feet

0 0.375 0.75 1.5 2.25 Miles

Created/Altered: 1/21/2015

G:\Infrastructure\Assets&Maintenance\Stormwater\StormwaterOutfalls20150121_at_v1.mxd