



REVISIONS

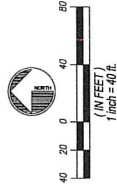
ZONING PLAN
Z100

DEVELOPMENT SUMMARY	
ZONING	C-1
PROPOSED ZONING	R-3A
PROPOSED ZONING	R-3A
SITE AREA	2.88 ACRES
NUMBER OF UNITS	12 UNITS
PROPOSED DENSITY	4.18 UNITS/ACRE
MAXIMUM DENSITY ALLOWED	N/A
MAXIMUM BUILDING HEIGHT	35 FEET
SETBACKS (FRONT)	20 FEET
SETBACKS (SIDE)	5 FEET
SETBACKS (REAR)	N/A
*VARIANCE FOR 10 FEET BETWEEN BALUNES IS BEING REQUESTED	

LOCATION MAP

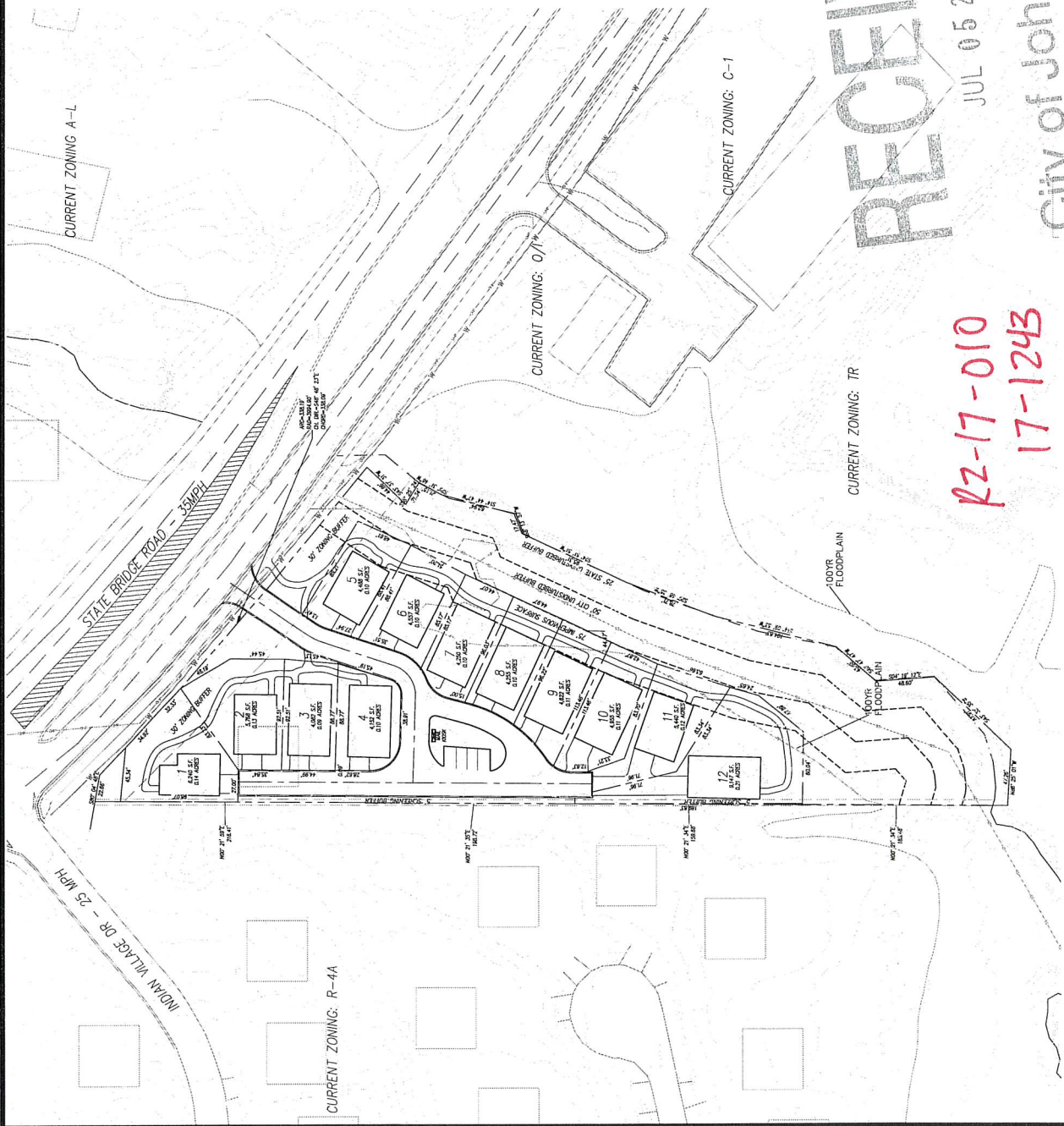


24 HOUR CONTACT:
JOHN LOYD
 770.868.7591



Utilities Protection Center, Inc.
 Know what's below.
 Call before you dig.

THIS PLAN IS FOR INFORMATION ONLY. THE CONTRACTOR SHALL VERIFY THE LOCATION AND DEPTH OF ALL UTILITIES PRIOR TO CONSTRUCTION. THE CONTRACTOR SHALL BE RESPONSIBLE FOR ANY DAMAGE TO UTILITIES CAUSED BY CONSTRUCTION. THE CONTRACTOR SHALL BE RESPONSIBLE FOR ANY DAMAGE TO UTILITIES CAUSED BY CONSTRUCTION.



RECEIVED
 JUL 05 2017
 City of Johns Creek
 Planning & Zoning

RZ-17-010
17-1243