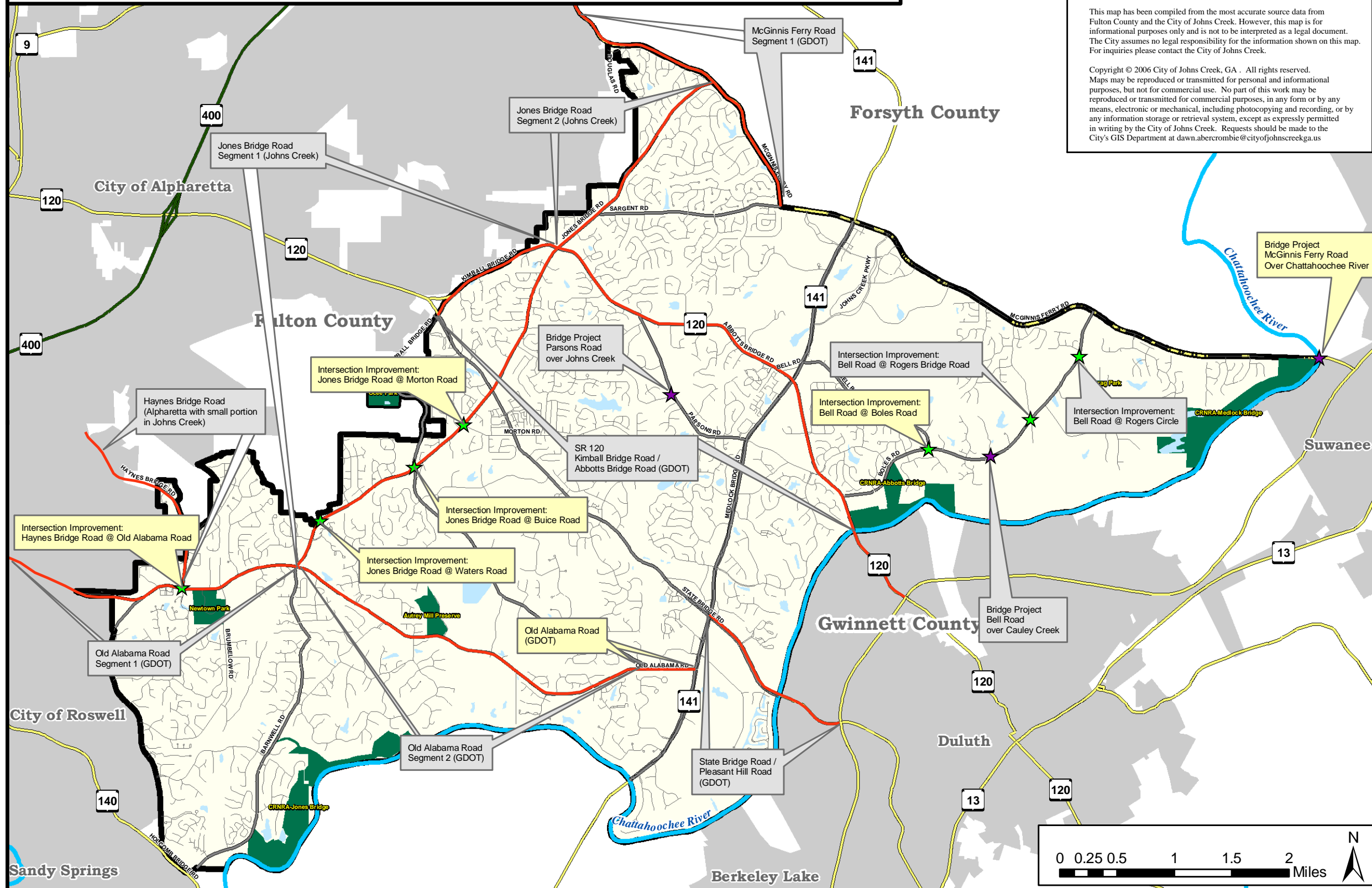


Transportation Capital Improvement Projects (FY2009)



Revision Date:
October 18, 2007

This map has been compiled from the most accurate source data from Fulton County and the City of Johns Creek. However, this map is for informational purposes only and is not to be interpreted as a legal document. The City assumes no legal responsibility for the information shown on this map. For inquiries please contact the City of Johns Creek.

Copyright © 2006 City of Johns Creek, GA. All rights reserved. Maps may be reproduced or transmitted for personal and informational purposes, but not for commercial use. No part of this work may be reproduced or transmitted for commercial purposes, in any form or by any means, electronic or mechanical, including photocopying and recording, or by any information storage or retrieval system, except as expressly permitted in writing by the City of Johns Creek. Requests should be made to the City's GIS Department at dawn.abercrombie@cityofjohnscreekga.us

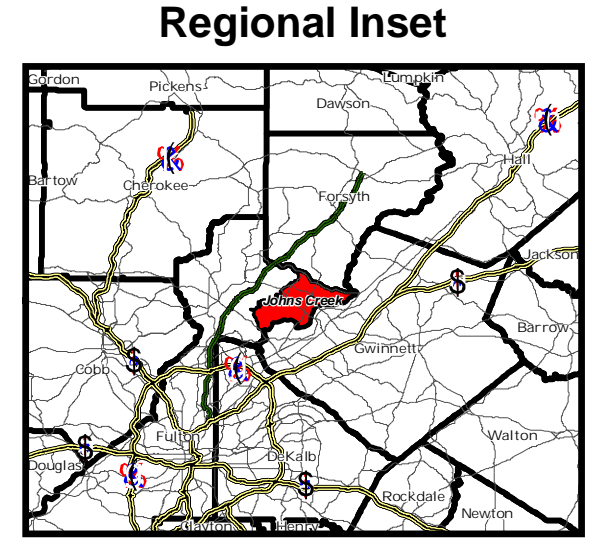


Figure T-3

Legend

Capital Improvement Projects

- ★ Intersection Improvement Project
- ★ Bridge Project
- Road Capacity Project

- Short - Term (0 - 5 Years)
- Long - Term (Greater Than 5 Years)

Road Layers

- Arterial/Collector
- Local Road

Other Layers

- Chattahoochee River
- Other State Highway / U.S. Highway
- Parks
- Johns Creek City Limits
- Other City Limits
- County Boundary
- Lakes / Ponds / Streams

Source: ARC, Fulton County, and Jacobs

This map is intended for planning purposes only.

