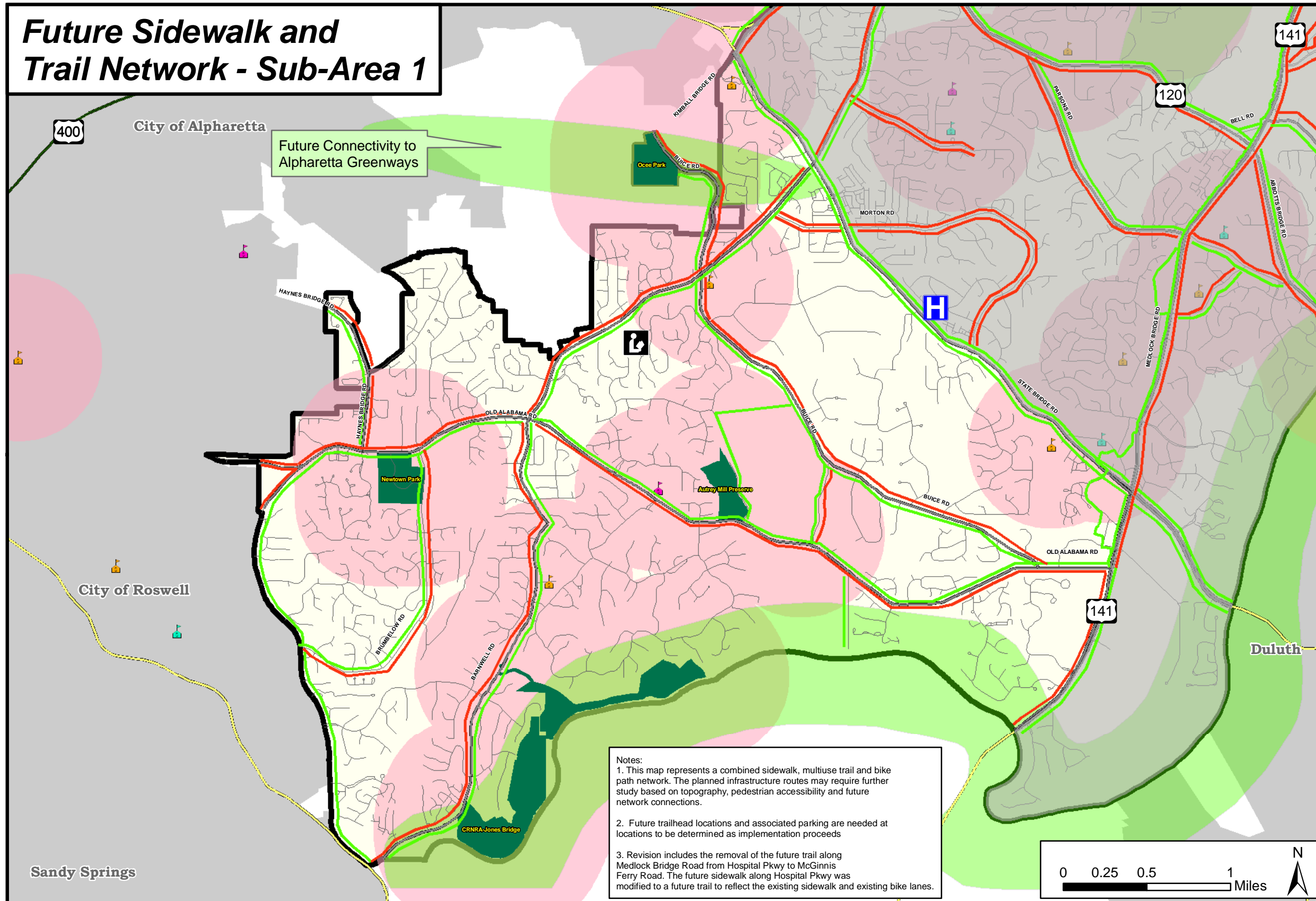


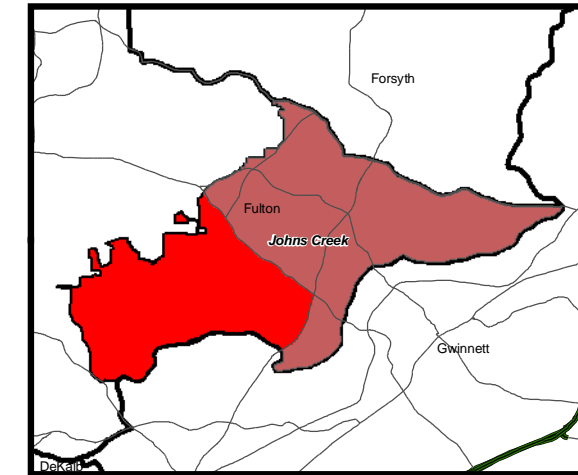
## Future Sidewalk and Trail Network - Sub-Area 1



Future Connectivity to Alpharetta Greenways

**Notes:**  
 1. This map represents a combined sidewalk, multiuse trail and bike path network. The planned infrastructure routes may require further study based on topography, pedestrian accessibility and future network connections.  
 2. Future trailhead locations and associated parking are needed at locations to be determined as implementation proceeds  
 3. Revision includes the removal of the future trail along Medlock Bridge Road from Hospital Pkwy to McGinnis Ferry Road. The future sidewalk along Hospital Pkwy was modified to a future trail to reflect the existing sidewalk and existing bike lanes.

### Regional Inset



**Figure 6A**

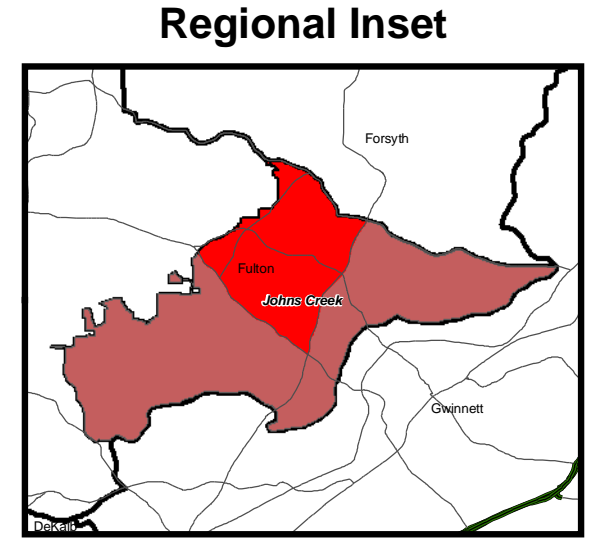
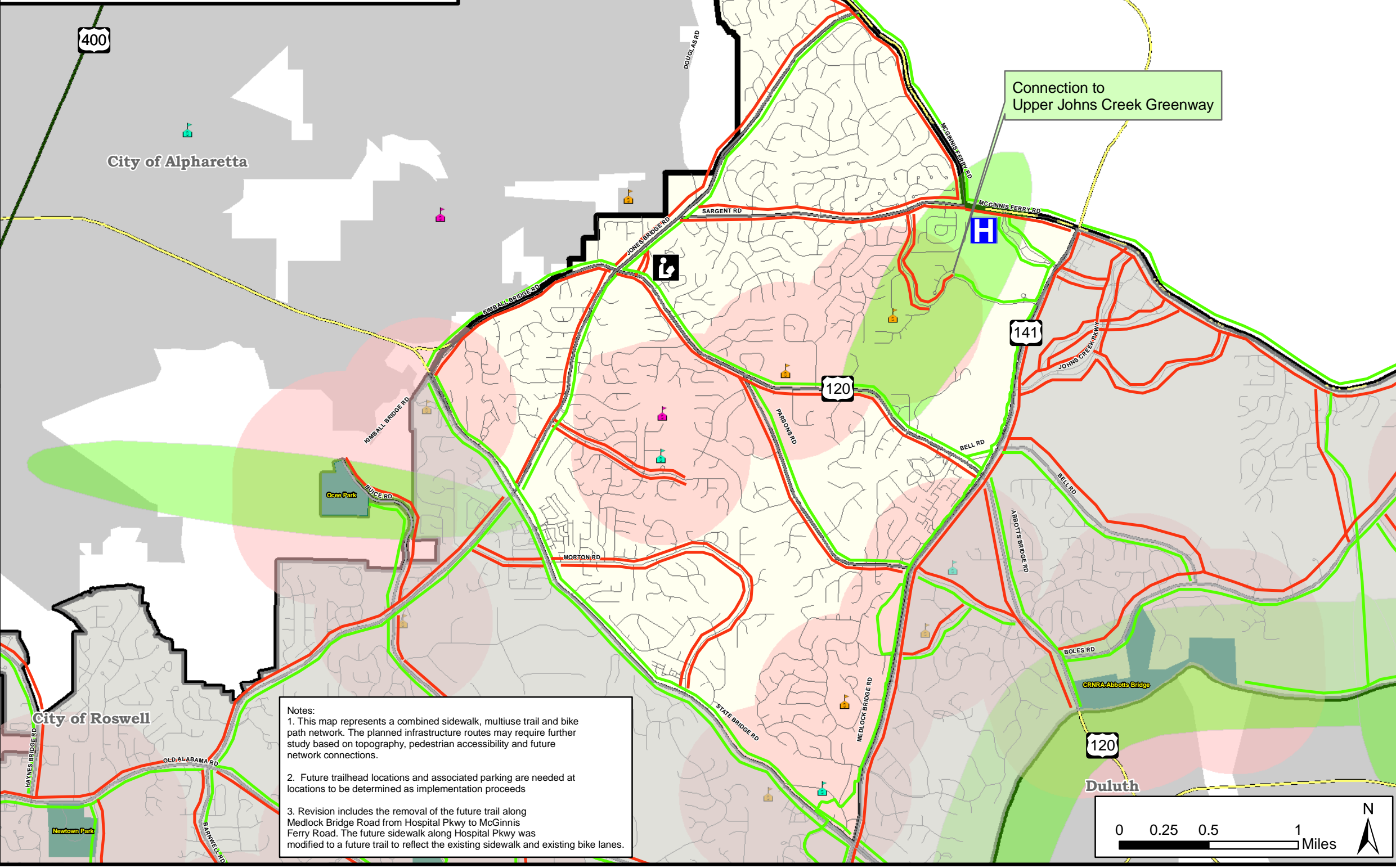
### Legend

- Pedestrian Trip Generators**
- Elementary School
  - Middle School
  - High School
  - 1/2 Mile Buffer (Radius) Of Pedestrian Trip Generators
  - Green Plan Recommendations
- Sidewalk / Multiuse Trail**
- Future Sidewalk
  - Future Multiuse Trail
- Road Layers**
- Arterial/Collector
  - Local Road
- Other Layers**
- Other State Highway / U.S. Highway
  - Parks
  - Johns Creek City Limits
  - County Boundary
  - Public Library
  - Hospital

Source: ARC, Fulton County, and Jacobs

This map is intended for planning purposes only.

## Future Sidewalk and Trail Network - Sub-Area 2



### Figure 6B

#### Legend

**Pedestrian Trip Generators**

- Elementary School
- Middle School
- High School
- 1/2 Mile Buffer (Radius) Of Pedestrian Trip Generators
- Green Plan Recommendations

**Sidewalk / Multiuse Trail**

- Future Sidewalk
- Future Multiuse Trail

**Road Layers**

- Arterial/Collector
- Local Road

**Other Layers**

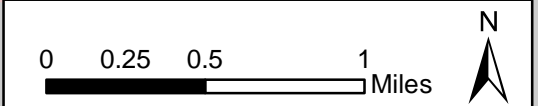
- Other State Highway / U.S. Highway
- Parks
- Johns Creek City Limits
- County Boundary
- Public Library
- Hospital

Source: ARC, Fulton County, and Jacobs

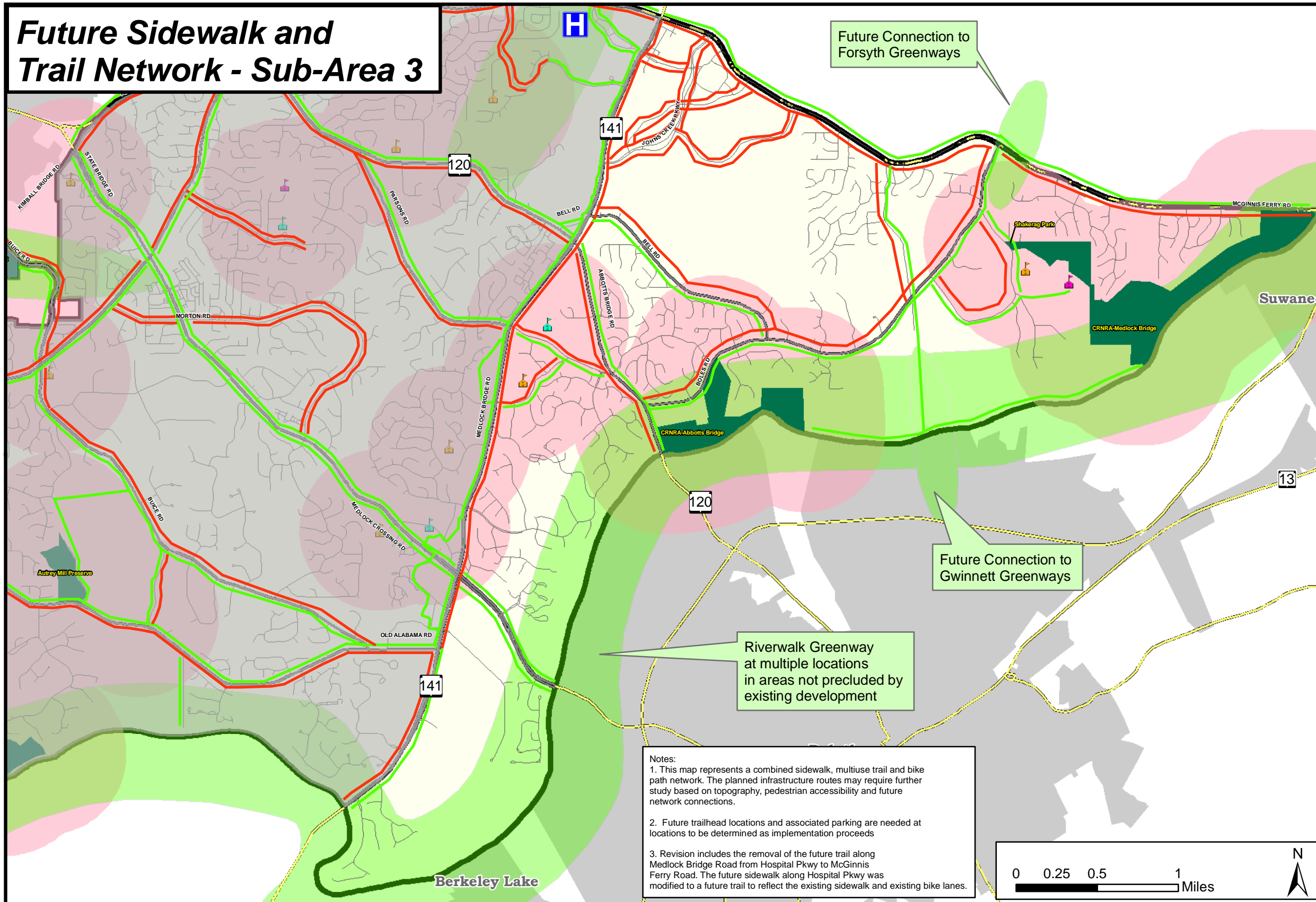
This map is intended for planning purposes only.

**Notes:**

1. This map represents a combined sidewalk, multiuse trail and bike path network. The planned infrastructure routes may require further study based on topography, pedestrian accessibility and future network connections.
2. Future trailhead locations and associated parking are needed at locations to be determined as implementation proceeds
3. Revision includes the removal of the future trail along Medlock Bridge Road from Hospital Pkwy to McGinnis Ferry Road. The future sidewalk along Hospital Pkwy was modified to a future trail to reflect the existing sidewalk and existing bike lanes.



## Future Sidewalk and Trail Network - Sub-Area 3



### Regional Inset

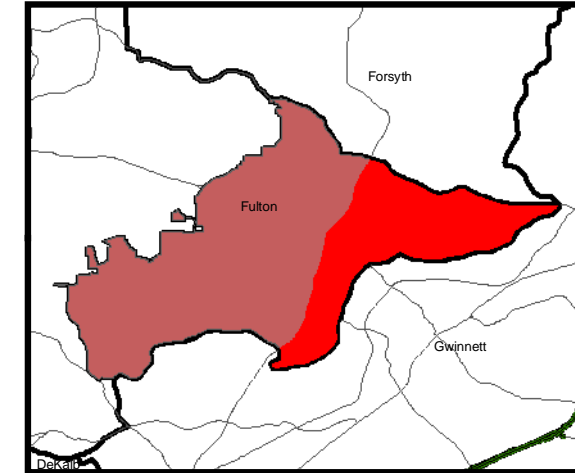


Figure 6C

### Legend

#### Pedestrian Trip Generators

- Elementary School
- Middle School
- High School
- 1/2 Mile Buffer (Radius) Of Pedestrian Trip Generators
- Green Plan Recommendations

#### Sidewalk / Multiuse Trail

- Future Sidewalk
- Future Multiuse Trail

#### Road Layers

- Arterial/Collector
- Local Road

#### Other Layers

- Other State Highway / U.S. Highway
- Parks
- Johns Creek City Limits
- Other City Limits
- County Boundary
- Hospital

Source: ARC, Fulton County, and Jacobs

This map is intended for planning purposes only.

Notes:  
 1. This map represents a combined sidewalk, multiuse trail and bike path network. The planned infrastructure routes may require further study based on topography, pedestrian accessibility and future network connections.  
 2. Future trailhead locations and associated parking are needed at locations to be determined as implementation proceeds  
 3. Revision includes the removal of the future trail along Medlock Bridge Road from Hospital Pkwy to McGinnis Ferry Road. The future sidewalk along Hospital Pkwy was modified to a future trail to reflect the existing sidewalk and existing bike lanes.

