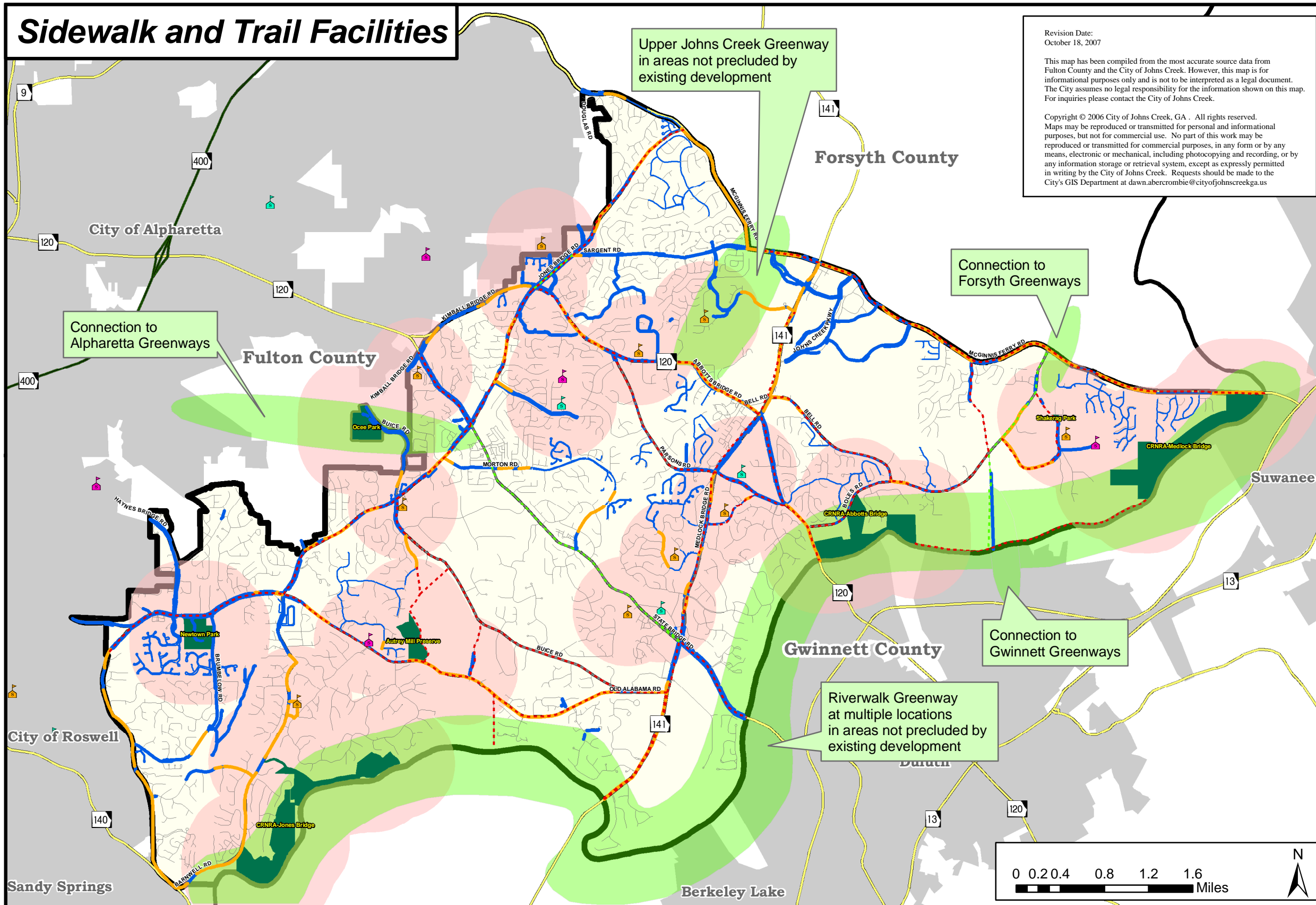


## Sidewalk and Trail Facilities

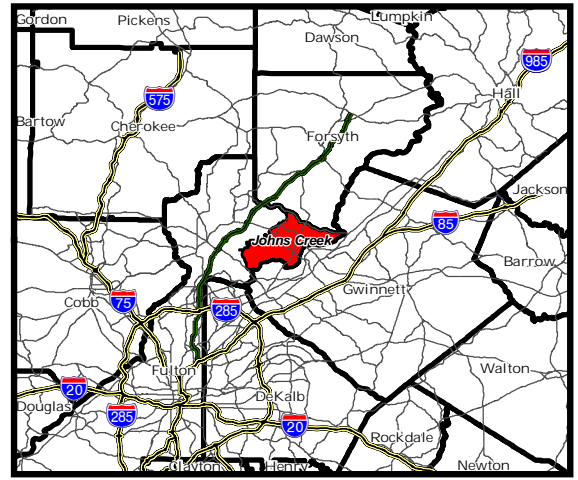


Revision Date:  
October 18, 2007

This map has been compiled from the most accurate source data from Fulton County and the City of Johns Creek. However, this map is for informational purposes only and is not to be interpreted as a legal document. The City assumes no legal responsibility for the information shown on this map. For inquiries please contact the City of Johns Creek.

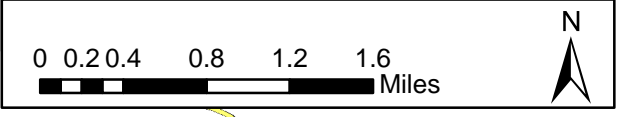
Copyright © 2006 City of Johns Creek, GA. All rights reserved. Maps may be reproduced or transmitted for personal and informational purposes, but not for commercial use. No part of this work may be reproduced or transmitted for commercial purposes, in any form or by any means, electronic or mechanical, including photocopying and recording, or by any information storage or retrieval system, except as expressly permitted in writing by the City of Johns Creek. Requests should be made to the City's GIS Department at dawn.abercrombie@cityofjohnscreekga.us

## Regional Inset



## Legend

- Pedestrian Trip Generators**
  - Elementary School
  - Middle School
  - High School
  - 1/2 Mile Buffer (Radius) Of Pedestrian Trip Generators
  - Green Plan Recommendations
- Sidewalks**
  - Existing Sidewalk
  - Recommended Sidewalk
- Multi Use Trails**
  - Existing Multi Use Trail
  - Recommended Multi Use Trail
- Road Layers**
  - Arterial/Collector
  - Local Road
- Other Layers**
  - Other State Highway / U.S. Highway
  - Parks
  - Johns Creek City Limits
  - Other City Limits
  - County Boundary



Source: ARC, Fulton County, and Jacobs

This map is intended for planning purposes only.