



City of Johns Creek Comprehensive Plan Community Agenda Transportation Recommendations

June 10, 2008

Transportation and the Comprehensive Plan

- Comprehensive Plan Community Assessment
 - Outlines City's vision, needs and opportunities
 - Provides assessment of current conditions and future needs regarding multi-modal transportation network
- Comprehensive Plan Community Agenda
 - Establishes policies and associated strategies in response to identified needs and opportunities
 - Recommends individual projects/programs that address policies and strategies
 - Short Term Work Program (STWP) includes only those projects/programs to be implemented within first 5 years (2009-2013)
- Transportation Master Plan (Comprehensive Plan Appendix B)
 - Provides additional detail regarding transportation system recommendations
 - 20-year plan "horizon" addresses short and longer term needs
 - Highest priority projects are those from the STWP
 - Serves as the "platform" for future detailed project development studies



Important Transportation Considerations

- Coordinated development of Transportation Master Plan with Comprehensive Plan ensures strong connection between land use and transportation and mutually complementary policies and recommendations
- Transportation needs identification relied on growth patterns and projections regarding population and employment as determined through the Comprehensive Plan process
- Travel demand model enables evaluation of Johns Creek's transportation system within a regional context that also considers growth in adjacent jurisdictions
- Local travel needs internal to Johns Creek evaluated, as well as needs related to travel to/from and through the city
- Transportation assessment and program is multi-modal; pedestrian, bicycle and transit modes were considered in addition to roadway
- Individual project recommendations are defined only to characterize the need; future concept development studies will provide details and specifics



Transportation Issues

- Through trips contribute significantly to peak hour congestion
- Key intersection operations constrain corridor capacity
- Limited roadway connectivity requires travel through major intersections
- Effective local transit connections could serve emerging activity areas and connect to regional transit in Johns Creek
- Transit mixed with vehicular traffic has limited travel time advantage over automobiles
- Neighborhoods are not well connected to schools, parks and community facilities with sidewalks and bicycle facilities
- Longer distance bicycle and trail routes are needed to access parks and provide recreational opportunities
- Enhancing transportation safety for all travel modes is a priority



Transportation Opportunities

- Maximize corridor efficiency through improvement of congested intersections
- Add road connectivity to increase options beyond use of congested corridors
- Consider use of undeveloped land and/or easements to add pedestrian and bicycle connectivity
- Maximize use of technology to assist in traffic operations improvements
- Increase emphasis on transit through application and expansion of planned transit improvements
- Plan and build multimodal connections in potentially high pedestrian activity areas



Transportation Policies and Strategies



Transportation Policies

- Facilitate safe and efficient movement of traffic along key corridors to minimize congestion.
- Apply innovative approaches and technologies to improve mobility, safety and environmental quality.
- Enhance capacity along key corridors while preserving the existing character of the two-lane residential roads in Johns Creek.
- Connect the sidewalk and multi-use trail network to allow safe pedestrian and bicycle travel throughout Johns Creek.
- Explore public transportation options for Johns Creek commuter travel to the Atlanta core, Hartsfield-Jackson Airport, and surrounding communities.



Transportation Policies and Strategies

- Policy: Facilitate safe and efficient movement of traffic along key corridors to minimize congestion.
 - Improve connectivity to reduce congestion at critical intersections as development/redevelopment occurs.
 - Provide necessary operation at key intersections to prevent bottlenecks from limiting overall capacity along roadways, including alternative intersection treatments where needed.
 - Develop multi-modal circulation and loading area plans for all schools to reduce school related congestion.



Transportation Policies and Strategies

- Policy: Apply innovative approaches and technologies to improve mobility, safety and environmental quality.
 - Utilize access management techniques to increase mobility, safety, and interconnectivity.
 - Continue development and application of ITS (Intelligent Transportation Systems) and incident management technology.
 - Promote state-of-the-art signal system technology.
 - Promote travel demand management (TDM) strategies to reduce trips.
 - Encourage increased mixed use development/redevelopment.
 - Facilitate public-private funding partnerships for improvements.
 - Coordinate with state, regional and, local agencies responsible for environmental compliance and guidelines.



Transportation Policies and Strategies

- Policy: Enhance capacity along key corridors while preserving the existing character of the two-lane residential roads in Johns Creek.
 - Enhance roadway capacity along high demand corridors.
 - Improve two-lane roads for efficient operations and safety.
 - Preserve current transportation investment through effective maintenance of transportation system.
 - Manage speed as appropriate to functional classification and adjacent land uses.



Transportation Policies and Strategies

- Policy: Connect the sidewalk and multi-use trail network to allow safe pedestrian and bicycle travel throughout Johns Creek.
 - Provide sidewalk and multi-use trail improvements to facilitate pedestrian and bicycle access within ½-mile of all schools, libraries, parks, and Chattahoochee River public use areas.
 - Connect sidewalk network to provide continuous sidewalk along all arterial and collector roads.
 - Create multi-use trail network based on adopted Multi-Use Trail Plan to include connections to adjacent jurisdictions' facilities and the Chattahoochee River.
 - Establish pedestrian and bicycle friendly policies and standards.



Transportation Policies and Strategies

- Policy: Explore public transportation options for Johns Creek commuter travel to the Atlanta core, Hartsfield-Jackson Airport, and surrounding communities.
 - Support GRTA, MARTA and GDOT efforts related to express transit service and commuter rail.
 - Support regional bus rapid transit (BRT) initiatives to connect Johns Creek to surrounding communities via State Bridge Road.
 - Provide adequate, safe and secure parking to support multi-modal and transit services.



Transportation Recommendations



Short Term Work Program

- Approximately 60 transportation projects/programs for implementation in 2009-2013
 - Concept design studies
 - Intersection and corridor operational and geometric improvements
 - Roadway and bridge widening
 - Park and ride lots and Travel Demand Management strategies
 - Greenway and sidewalk construction
 - Pedestrian and bicycle plans and programs
 - System monitoring and maintenance



Transportation Master Plan Recommendations

- Approximately 115 projects/programs including roadway, intersection, pedestrian and bicycle, and transit improvements
- Highest priority recommendations included within the 5-year Short Term Work Program
- Additional, policy related recommendations
 - Functional classification system
 - Level of service (LOS) standard
- Phasing plan provides starting point for decision makers to use in prioritizing improvements for funding and implementation
- Implementation time period dependent on factors including level of need, estimated cost, available funding, and difficulty of implementation from a planning, design and/or permitting perspective



Legend

2030 Intersection Improvement Projects*

- Major Intersection Improvement (Grade Separation at Unconventional / At-Grade)
- Intersection Improvement (Short Term Work Program)
- ▲ Intersection Improvement (Mid and Long Term)

2030 Recommended Roadway Improvements

- Support Regional Efforts for Future Widening - 6 Lanes
- Transit Enhanced Corridor to Support Regional Bus Rapid Transit (BRT)
- Widening to 4 Through Lanes
- Improve 4 Lane Road
- Corridor Operational Improvements - Maintain 2 Through Lanes
- Widening to 3 Through Lanes
- Foster Increased Local Roadway Connectivity

Johns Creek Road Network

- Major Road
- Local Road

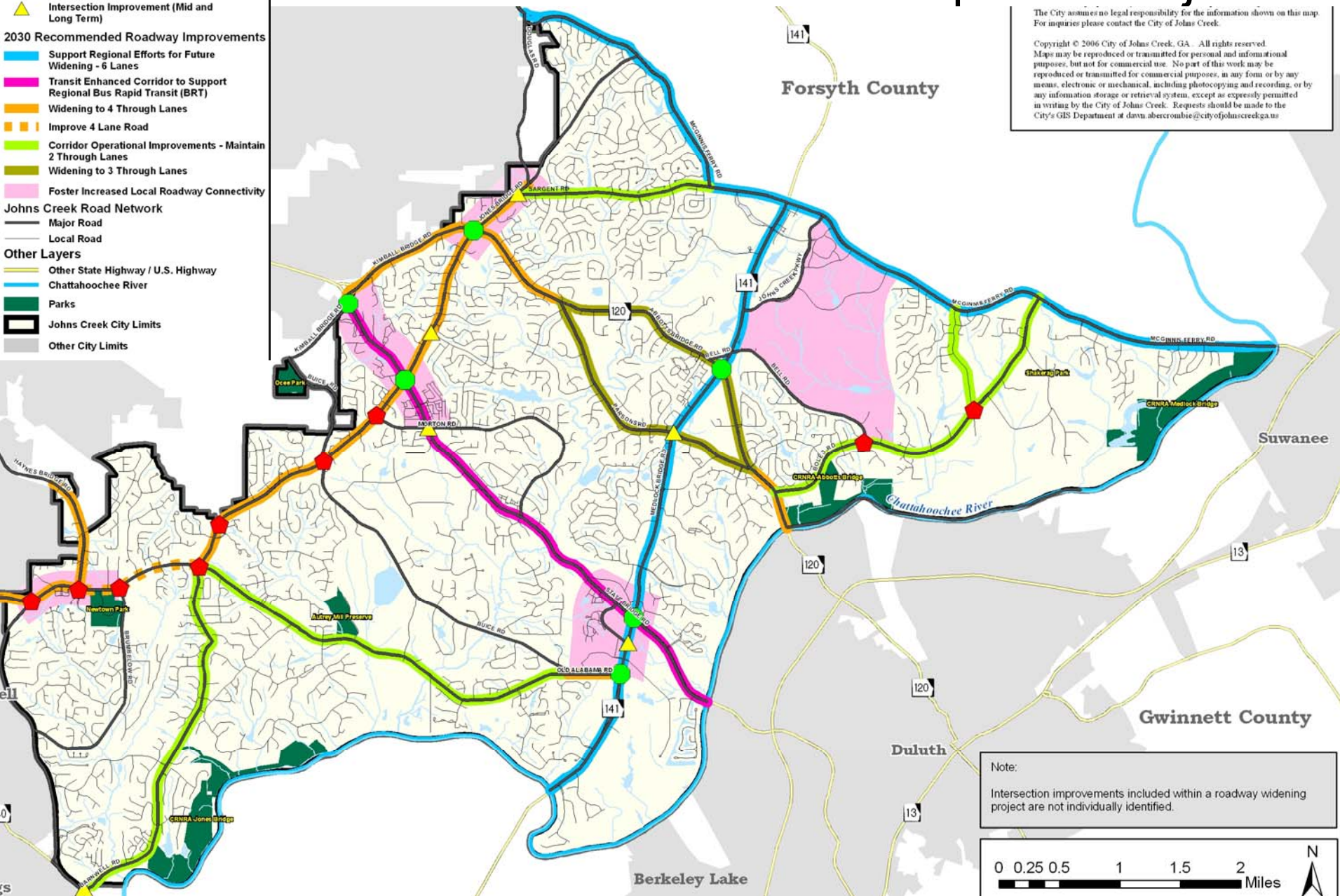
Other Layers

- Other State Highway / U.S. Highway
- Chattahoochee River
- Parks
- Johns Creek City Limits
- Other City Limits

2030 Recommended Transportation Projects

The City assumes no legal responsibility for the information shown on this map. For inquiries please contact the City of Johns Creek.

Copyright © 2006 City of Johns Creek, GA. All rights reserved. Maps may be reproduced or transmitted for personal and informational purposes, but not for commercial use. No part of this work may be reproduced or transmitted for commercial purposes, in any form or by any means, electronic or mechanical, including photocopying and recording, or by any information storage or retrieval system, except as expressly permitted in writing by the City of Johns Creek. Requests should be made to the City's GIS Department at dawn.abercrombie@cityofjohnscreek.ga.us



Note:
Intersection improvements included within a roadway widening project are not individually identified.



Transportation Master Plan Program Recommendations

- Signal installation and timing
- Intersection improvement
- Access management
- Bridge maintenance
- Safe Routes to School
- Sidewalk connectivity and reconstruction
- Transit and Travel Demand Management (TDM)
- Road resurfacing
- Neighborhood traffic management

